

Clarence DeBelle

B.Econ., LL.B.

West Vancouver's Luxury Home Real Estate Agent!

Tel.: 604-726-5780

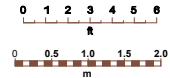
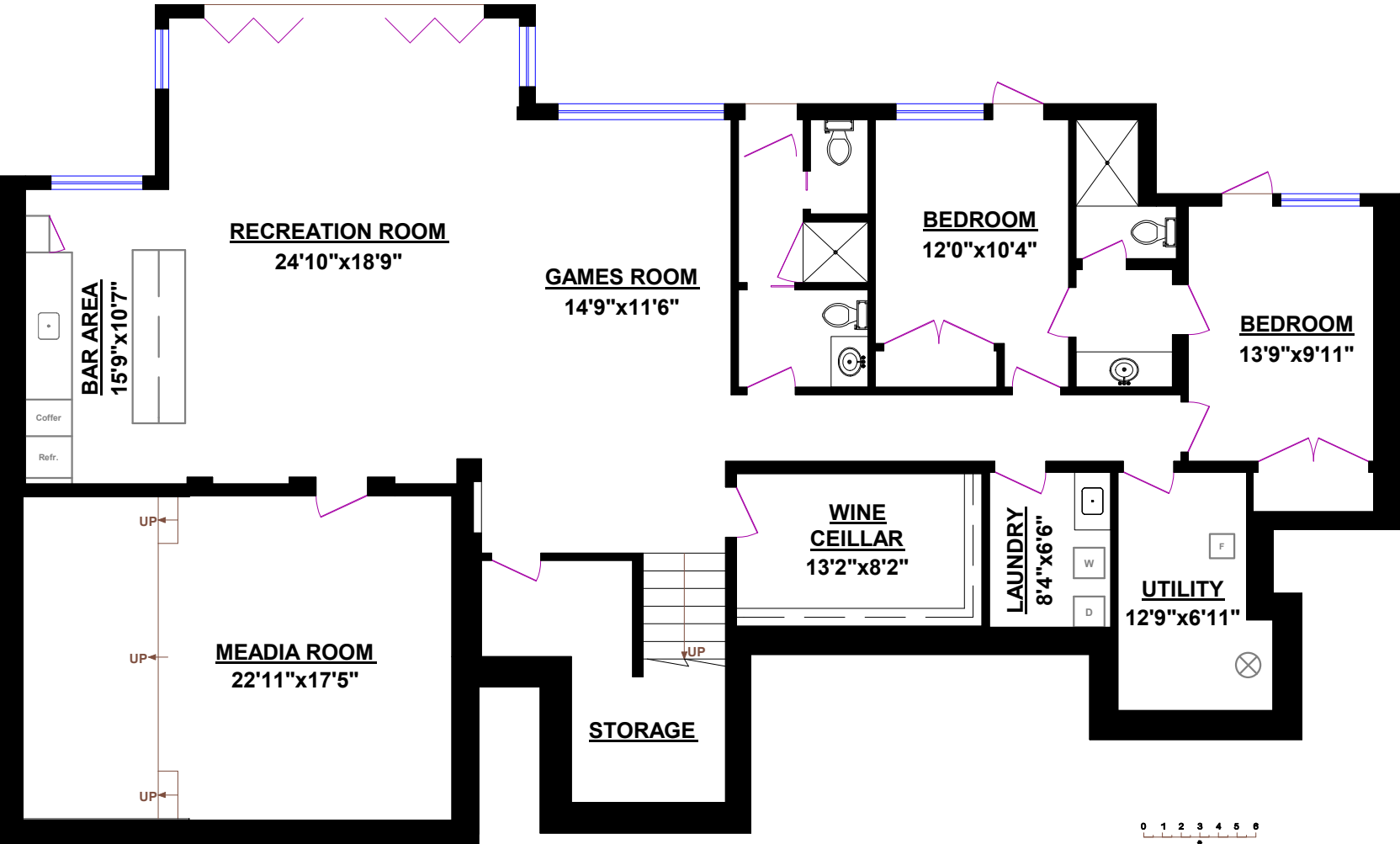
www.clarencedebelle.com



1035 MILLSTREAM ROAD, WEST VANCOUVER

TOTALS	
MAIN FLOOR:	2,574 sq.ft.
UPPER FLOOR	2,324 sq.ft.
LOWER FLOOR	2,618 sq.ft.
TOTAL FINISHED	7,516 sq.ft.
UNFINISHED	546 sq.ft.
TOTAL:	8,062 sq.ft.

OTHER AREAS:	
Garage:	445 sq.ft.
Garage:	247 sq.ft.
Pool Mech.:	299 sq.ft.



LOWER LEVEL

© Vancouver Realty Support Group Inc., (604) 761-7919



www.floorplansvancouver.com
PREMIER PRODUCTS AND SERVICES