

# CLARENCE DEBELLE

## Angell Hasman & Associates

Tel.: 604-726-5780

www.clarencedebelle.com

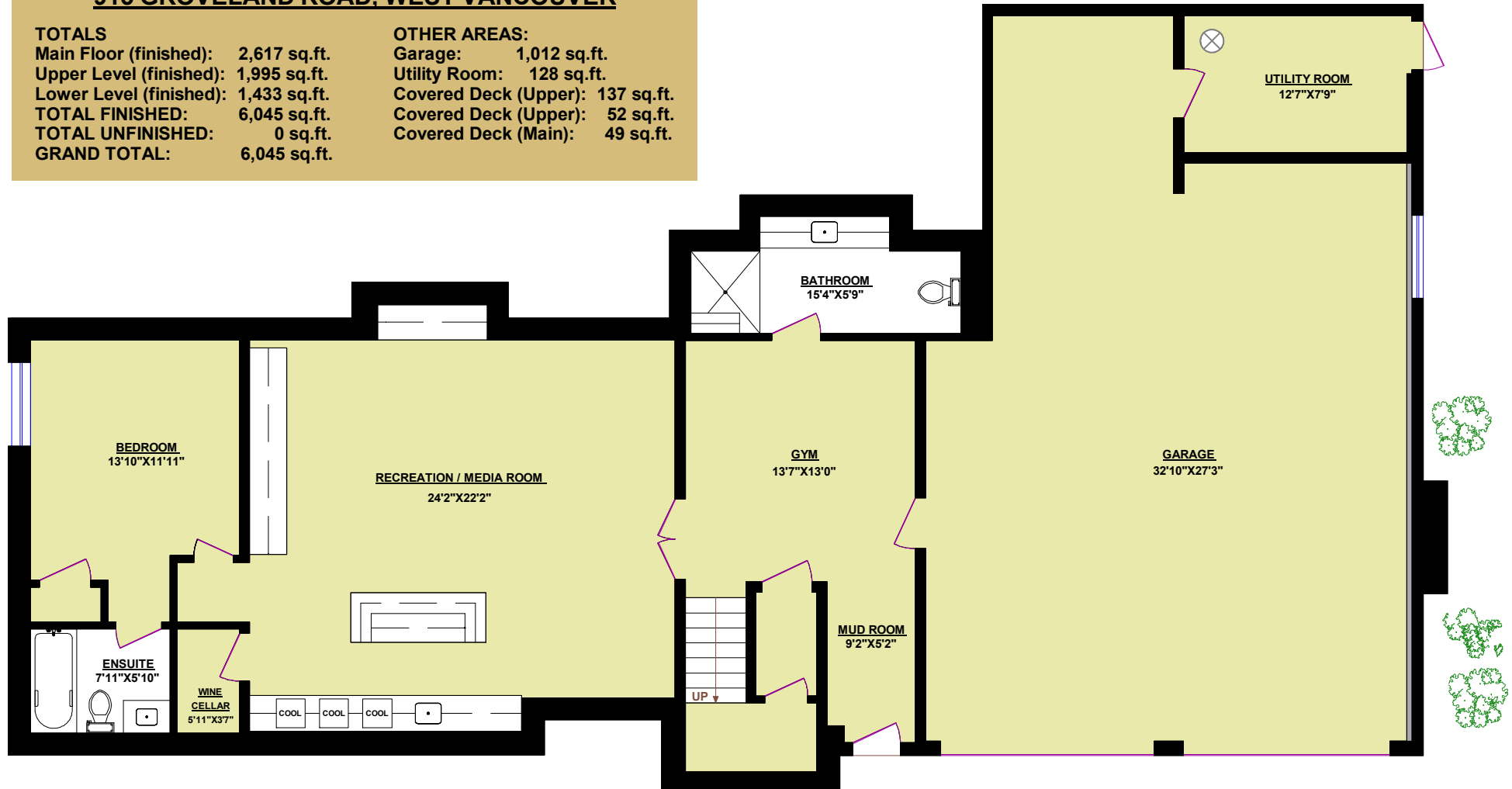
### 915 GROVELAND ROAD, WEST VANCOUVER

#### TOTALS

Main Floor (finished): 2,617 sq.ft.  
 Upper Level (finished): 1,995 sq.ft.  
 Lower Level (finished): 1,433 sq.ft.  
**TOTAL FINISHED: 6,045 sq.ft.**  
 TOTAL UNFINISHED: 0 sq.ft.  
**GRAND TOTAL: 6,045 sq.ft.**

#### OTHER AREAS:

Garage: 1,012 sq.ft.  
 Utility Room: 128 sq.ft.  
 Covered Deck (Upper): 137 sq.ft.  
 Covered Deck (Upper): 52 sq.ft.  
 Covered Deck (Main): 49 sq.ft.



**LOWER LEVEL**

