

14 - 2418 AVON PLACE
PORT COQUITLAM, BC

Clarence DeBelle

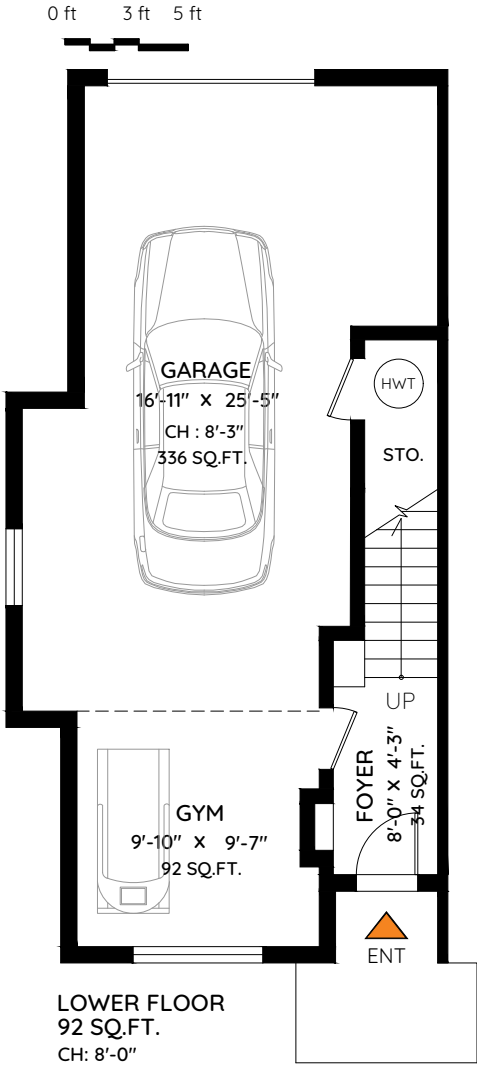
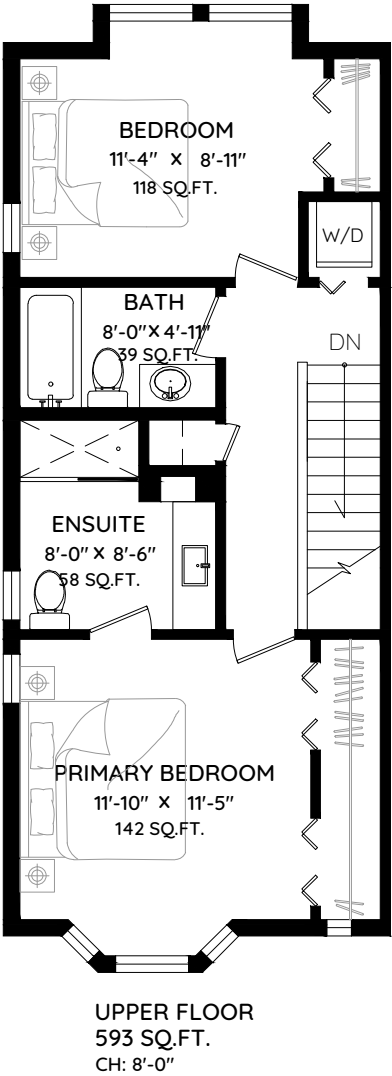
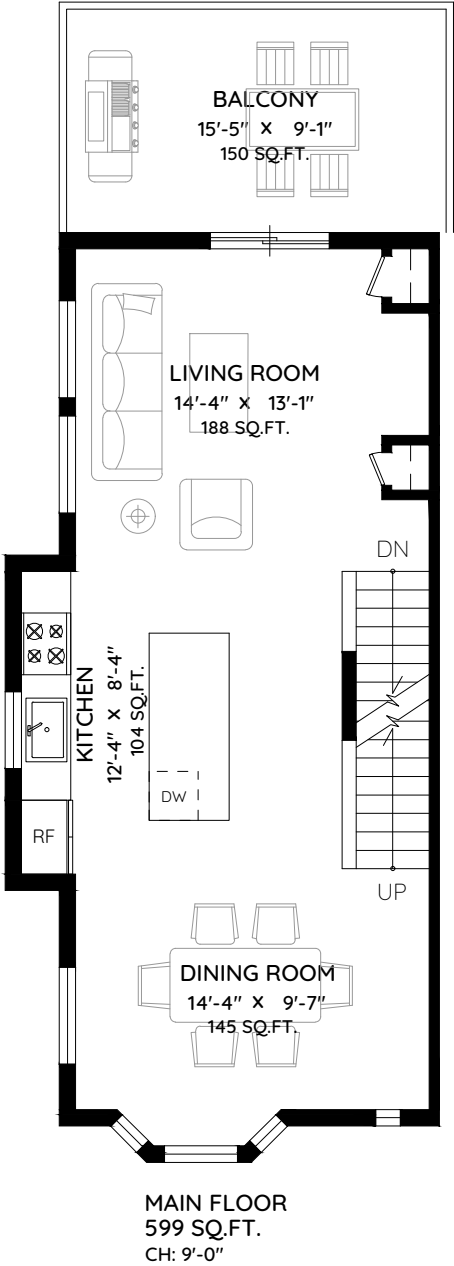
Personal Real Estate Corporation

Greater Vancouver's Pre-Eminent Luxury and Family Home Real Estate Agent

clarence@clarencedebelle.com

604.726.5780

MAIN	599 SQ.FT.	GARAGE	384 SQ.FT.
UPPER	593 SQ.FT.	BALCONY	150 SQ.FT.
LOWER	92 SQ.FT.	TOTAL	534 SQ.FT.
TOTAL	1,284 SQ.FT.		
GYM	110 SQ.FT.		
TOTAL AREA	1,394 SQ.FT.		



The floor plan and measurements are approximate, typically within +/- 2%. These are intended strictly for advertising purposes. They may encompass unfinished areas and are not intended for architectural or construction applications. There may be variances in the numbers if there were restrictions on property access or if taking precise measurements at the time of measuring isn't feasible. E&O insured.