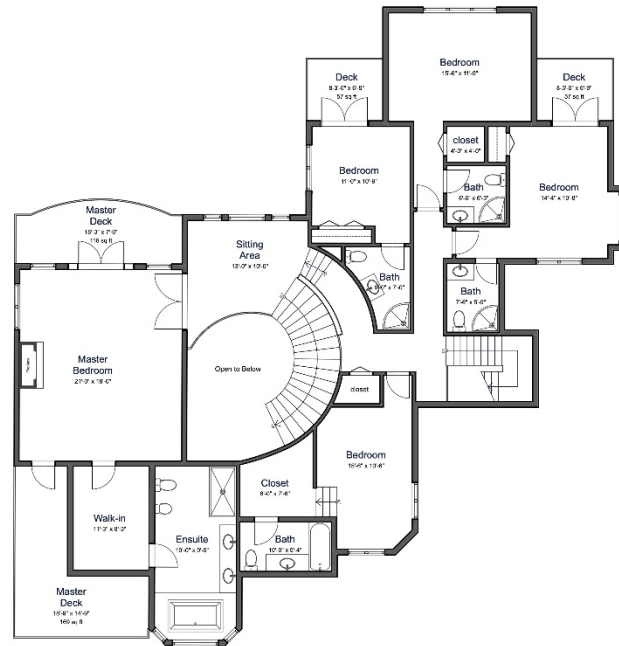
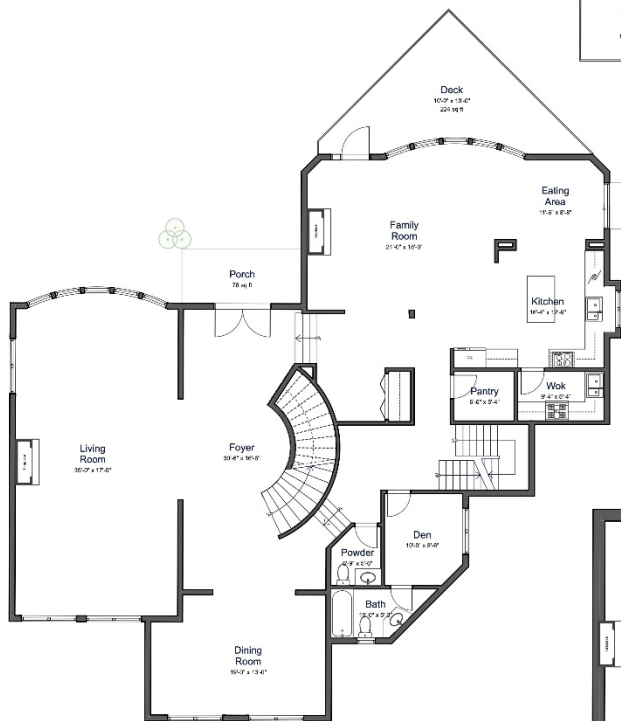


1496 Bramwell Road

Upper Level	2,468
Main Level	2,800
Lower Level	2,396
	7,664 sq ft



Upper Level



Main Level



Lower Level



all measurements from interior wall face; wall thickness assumed based on standard wall assemblies; single family dwelling floor areas to exterior wall face; strata property areas as per BOMA multi-unit residential buildings Z65.4-2010 gross method A; and may differ from strata plan; measurements & floor areas for marketing purposes only.

Friday, June 12, 2020