

# CLARENCE DEBELLE

Personal Real Estate Corporation

West Vancouver's Luxury Home Real Estate Agent!

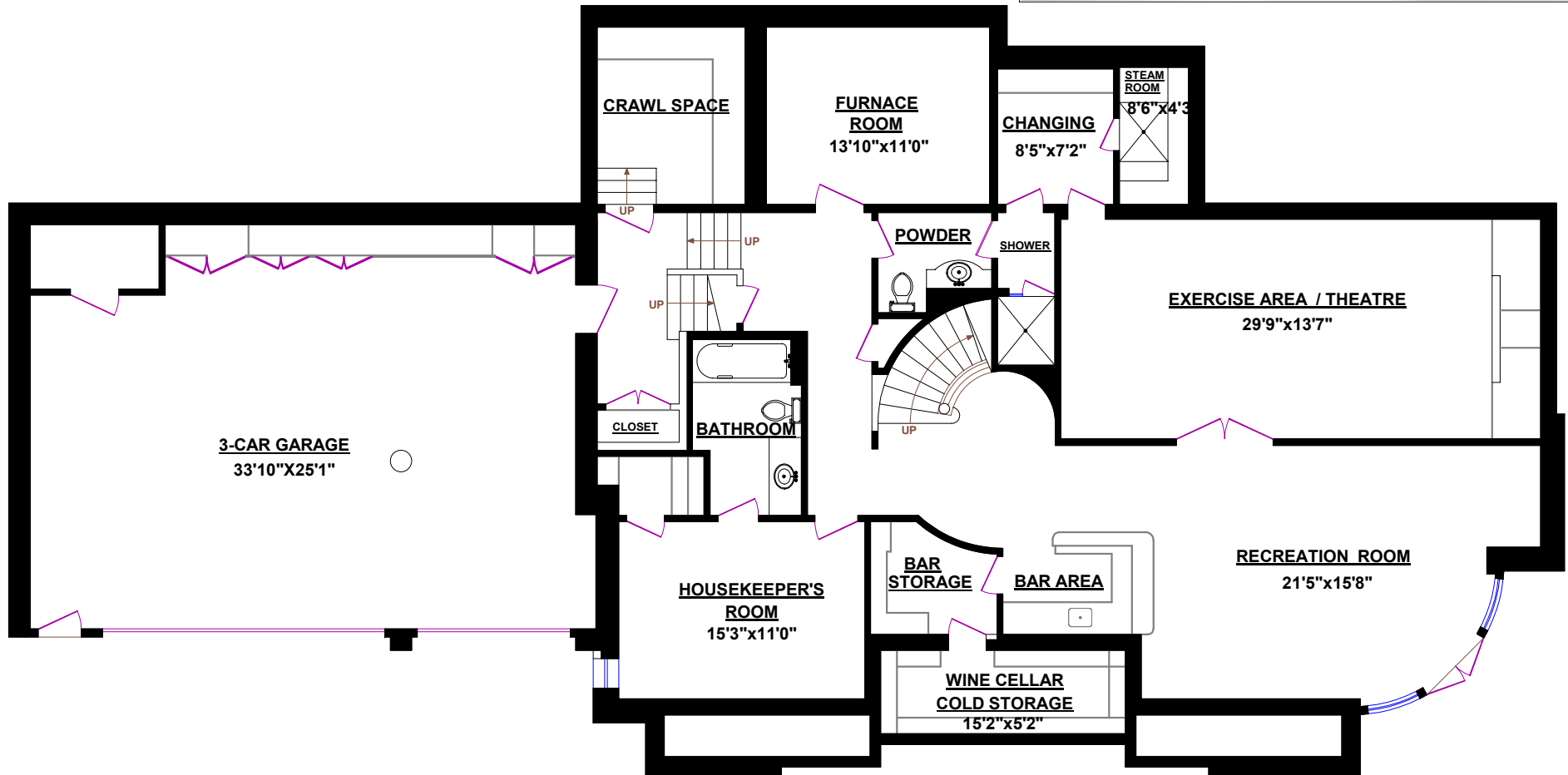


Tel.: 604-726-5780  
www.clarencedebelle.com

## 1507 PINECREST DRIVE, WEST VANCOUVER

TOTALS*	
Main Floor:	2,489 sq.ft.
Upper Level:	1,934 sq.ft.
Lower Level:	2,109 sq.ft.
<b>TOTAL HOUSE:</b>	<b>6,532 sq.ft.</b>
Accessory Building:	270 sq.ft.
<b>GRAND TOTAL:</b>	<b>6,802 sq.ft.</b>

OTHER AREAS*:	
3-Car Garage:	998 sq.ft.



\*All room dimensions, names and square footage for this house were based on provided blueprints and may vary from the dimensions and names of the rooms and square footage of the house as built. Square Footage may include lower height ceiling areas, openings in floors not associated with stairs, or openings in floors exceeding the area of associated stairs, or unfinished areas.

### LOWER LEVEL\*

for illustrative purposes only