

CLARENCE DEBELLE
Personal Real Estate Corporation

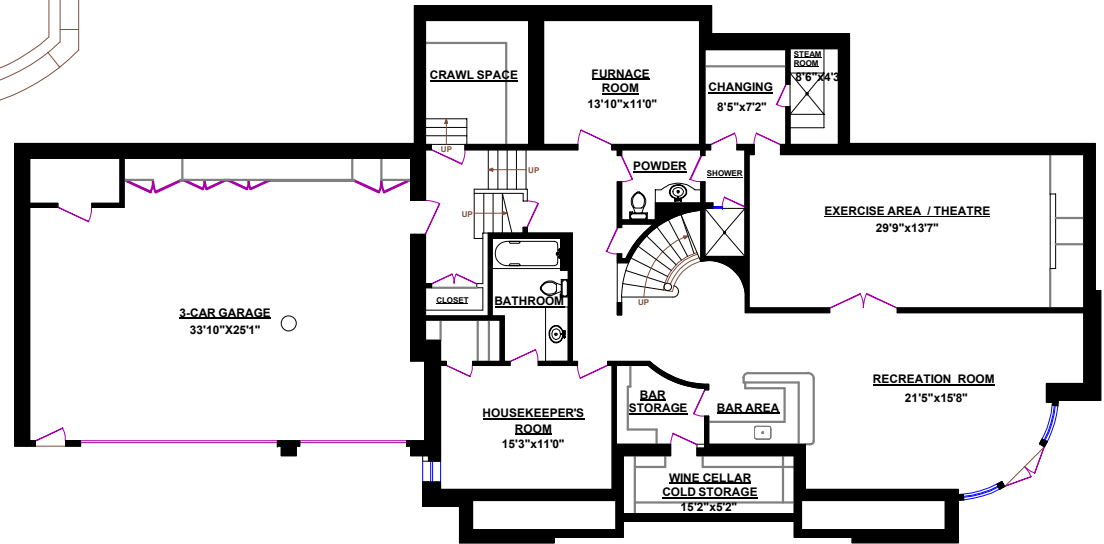
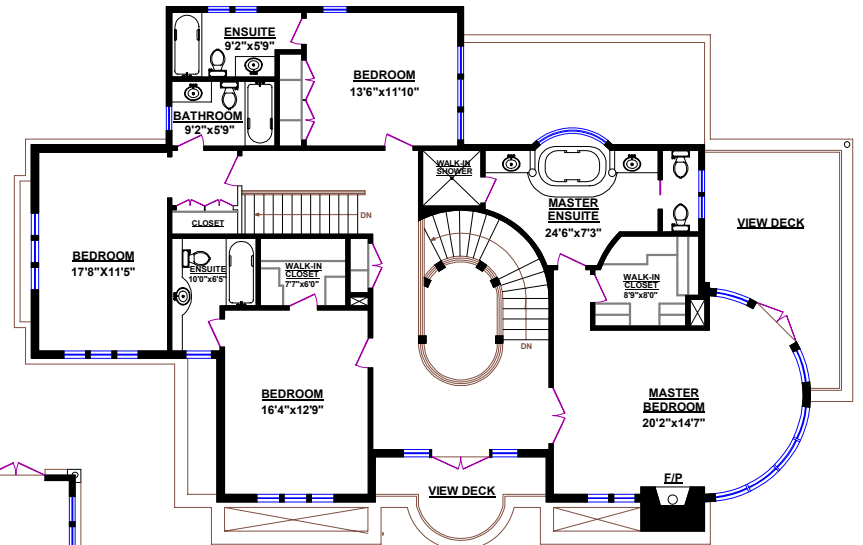
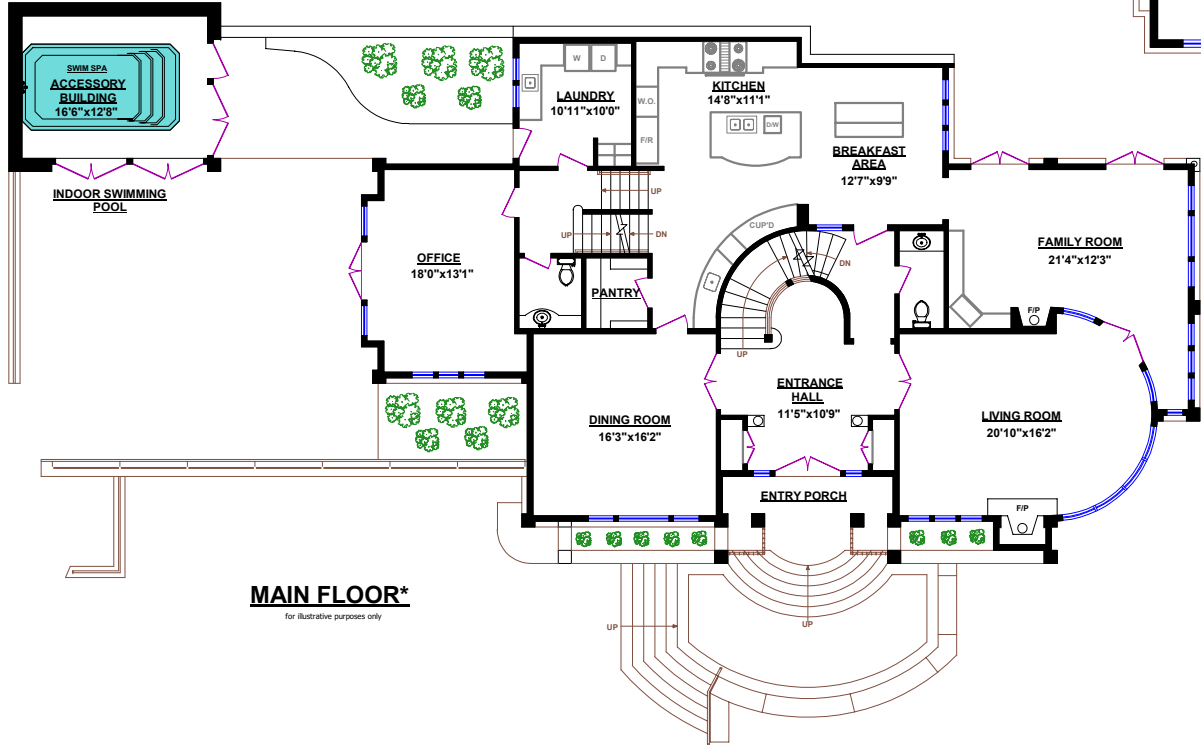
West Vancouver's Luxury Home Real Estate Agent!



Tel.: 604-726-5780
www.clarencedebelle.com

1507 PINECREST DRIVE, WEST VANCOUVER

TOTALS*		OTHER AREAS*:	
Main Floor:	2,489 sq.ft.	3-Car Garage:	998 sq.ft.
Upper Level:	1,934 sq.ft.		
Lower Level:	2,109 sq.ft.		
TOTAL HOUSE:	6,532 sq.ft.		
Accessory Building:	270 sq.ft.		
GRAND TOTAL:	6,802 sq.ft.		



*All room dimensions, names and square footage for this house were based on provided blueprints and may vary from the dimensions and names of the rooms and square footage of the house as built. Square Footage may include lower height ceiling areas, openings in floors not associated with stairs, or openings in floors exceeding the area of associated stairs, or unfinished areas.

