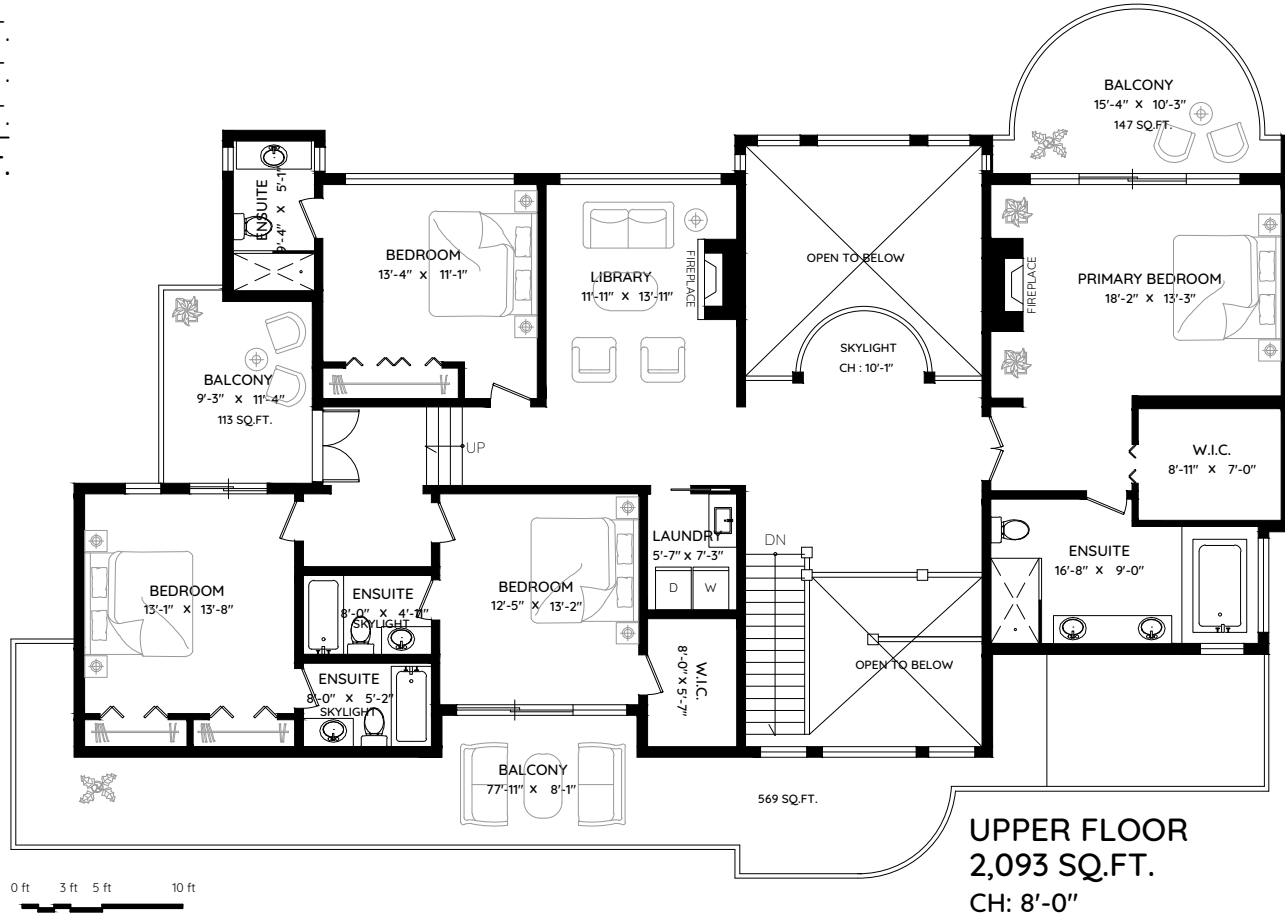


# 1562 PINECREST DRIVE

## WEST VANCOUVER, BC

**Clarence DeBelle**  
 Personal Real Estate Corporation  
 Greater Vancouver's Pre-Eminent Luxury and Family Home Real Estate Agent  
 clarence@clarencedebelle.com  
 604.726.5780

MAIN	2,259 SQ.FT.
UPPER	2,093 SQ.FT.
LOWER	2,020 SQ.FT.
<b>TOTAL</b>	<b>6,372 SQ.FT.</b>
GARAGE	679 SQ.FT.
UTILITY	71 SQ.FT.
BALCONY	975 SQ.FT.
POOL	659 SQ.FT.
<b>TOTAL</b>	<b>2,384 SQ.FT.</b>



The floor plan and measurements are approximate, typically within +/- 2%. These are intended strictly for advertising purposes. They may encompass unfinished areas and are not intended for architectural or construction applications. There may be variances in the numbers if there were restrictions on property access or if taking precise measurements at the time of measuring isn't feasible. E&O insured.

