

Clarence DeBelle

B.Econ., LL.B.

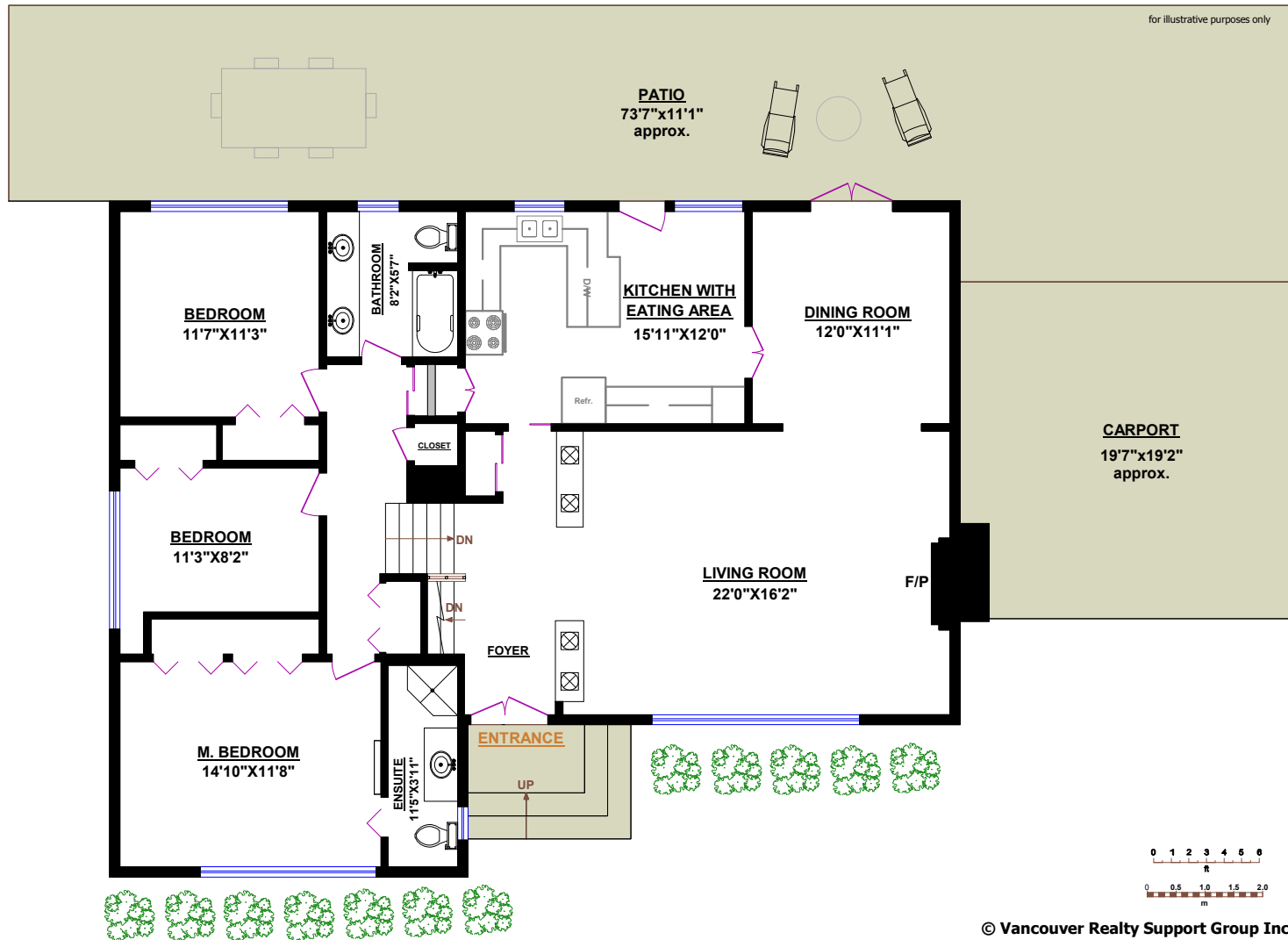


Tel.: 604-726-5780
www.clarencedebelle.com

171 STEVENS DRIVE, WEST VANCOUVER

TOTALS	
Main Floor (finished):	848 sq.ft.
Upper Level (finished):	766 sq.ft.
Lower Level (finished):	771 sq.ft.
TOTAL FINISHED:	2,385 sq.ft.
TOTAL UNFINISHED:	0 sq.ft.
GRAND TOTAL:	2,385 sq.ft.

OTHER AREAS:	
Crawl Storage Area:	841 sq.ft.



MAIN FLOOR AND UPPER LEVEL

© Vancouver Realty Support Group Inc., (604) 761-7919

 www.floorplansvancouver.com
 PREMIER PRODUCTS AND SERVICES