

# CLARENCE DEBELLE

Personal Real Estate Corporation

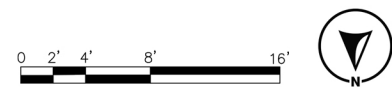
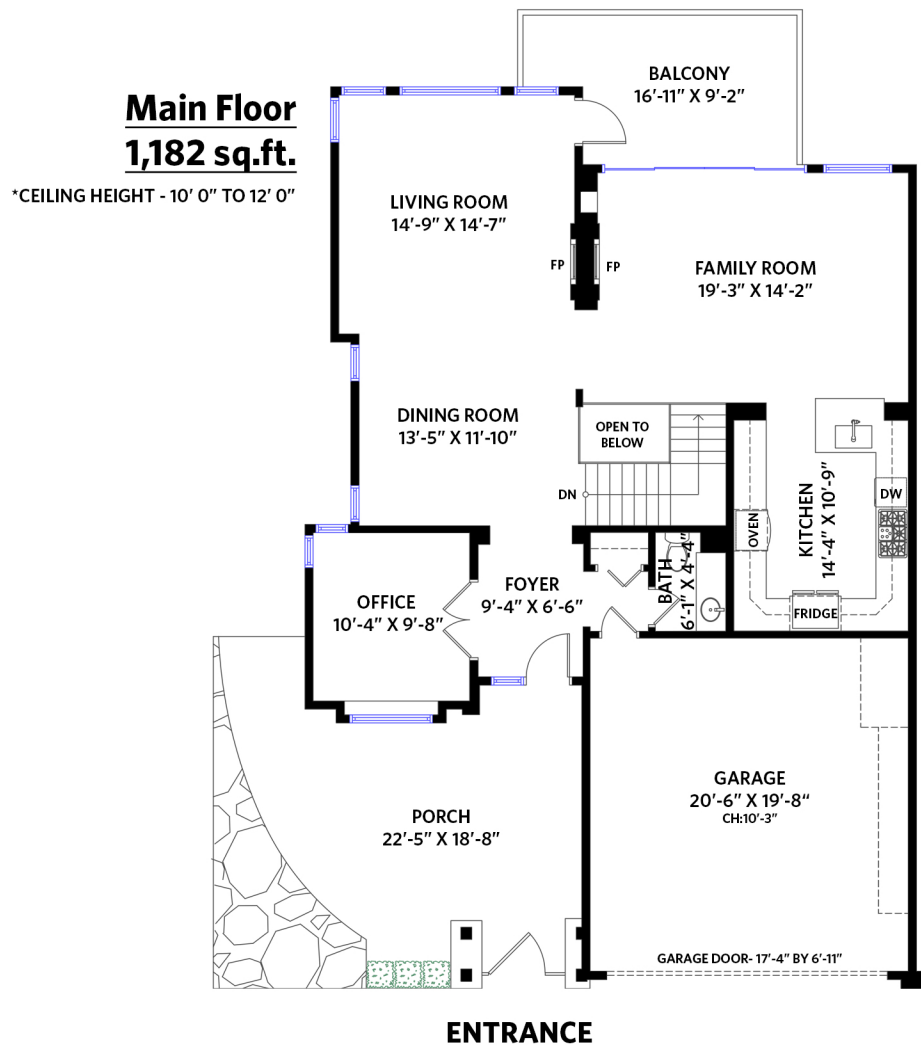
West Vancouver's Luxury Home Real Estate Agent!



Tel.: 604-726-5780  
www.clarencedebelle.com

## 2406 Binning Lane, West Vancouver

TOTALS		Other Areas:	
Main Floor:	1,182 sq.ft.	2-Car Garage:	436 sq.ft.
Lower Floor:	1,223 sq.ft.	Main Floor Porch:	319 sq.ft.
<b>HOME TOTAL:</b>	<b>2,405 sq.ft.</b>	Main Floor Balcony:	149 sq.ft.
		Lower Floor Balcony:	155 sq.ft.



Floor plan measurements, dimensions, square footage, existing structures and features are approximations and for illustrative purposes only. We make no guarantee, warrantrepresentation, expressed or implied, as to the accuracy and completeness of this rendering. Independent verification is recommended.