

CLARENCE DEBELLE

Personal Real Estate Corporation

West Vancouver's Luxury Home Real Estate Agent!



Tel.: 604-726-5780

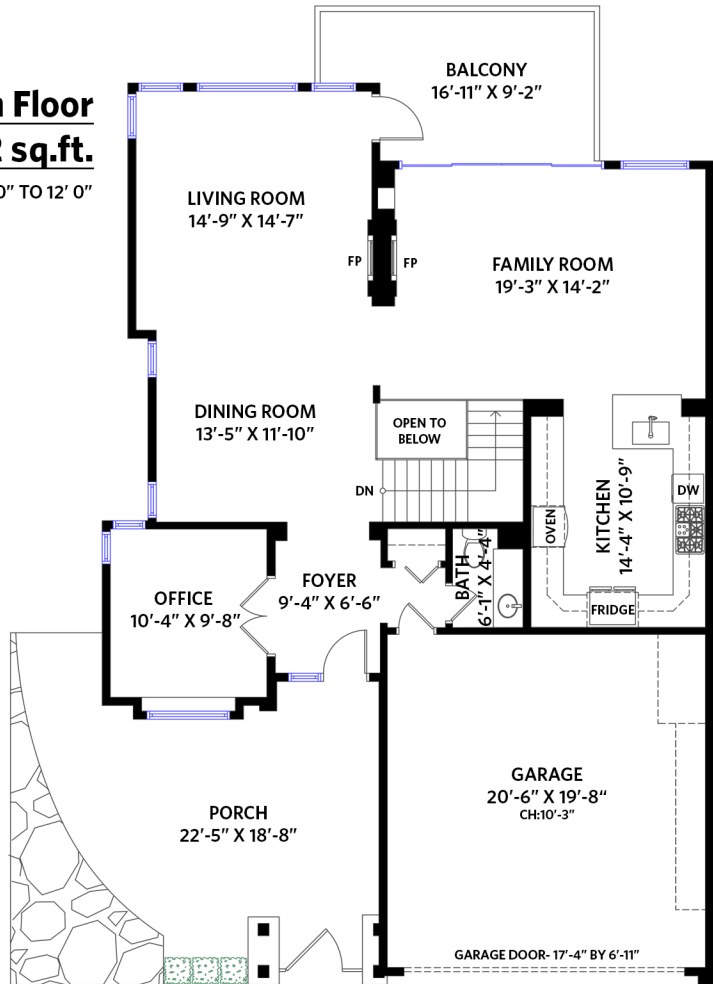
www.clarencedebelle.com

2406 Binning Lane, West Vancouver

TOTALS		Other Areas:	
Main Floor:	1,182 sq.ft.	2-Car Garage:	436 sq.ft.
Lower Floor:	1,223 sq.ft.	Main Floor Porch:	319 sq.ft.
HOME TOTAL:	2,405 sq.ft.	Main Floor Balcony:	149 sq.ft.
		Lower Floor Balcony:	155 sq.ft.

Main Floor 1,182 sq.ft.

*CEILING HEIGHT - 10' 0" TO 12' 0"



ENTRANCE

Lower Floor 1,223 sq.ft.

*CEILING HEIGHT - 8' 0" TO 9' 0"

