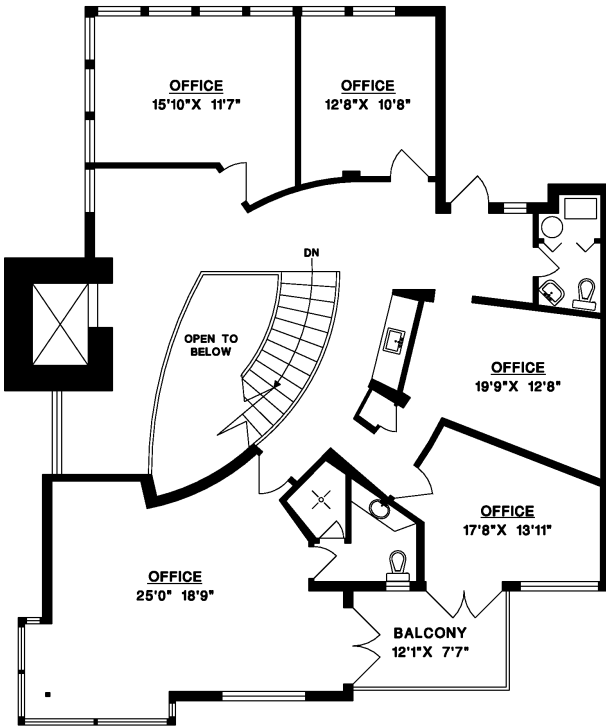


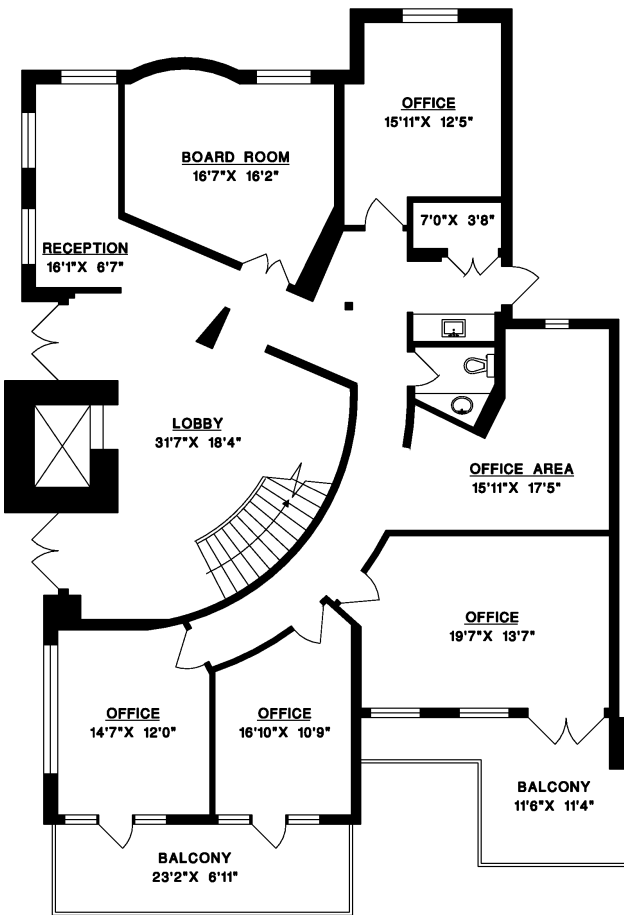
**2489 BELLEVUE AVENUE  
WEST VANCOUVER**

UPPER OFFICE	1,879 SQ.FT.
MAIN OFFICE	2,386 SQ.FT.
LOWER OFFICE	1,085 SQ.FT.
GARAGE	4,129 SQ.FT.
STORAGE ROOMS	266 SQ.FT.
UTILITY ROOMS	515 SQ.FT.
ELEVATORS	269 SQ.FT.
BALCONIES	434 SQ.FT.
OPEN TO BELOW	111 SQ.FT.

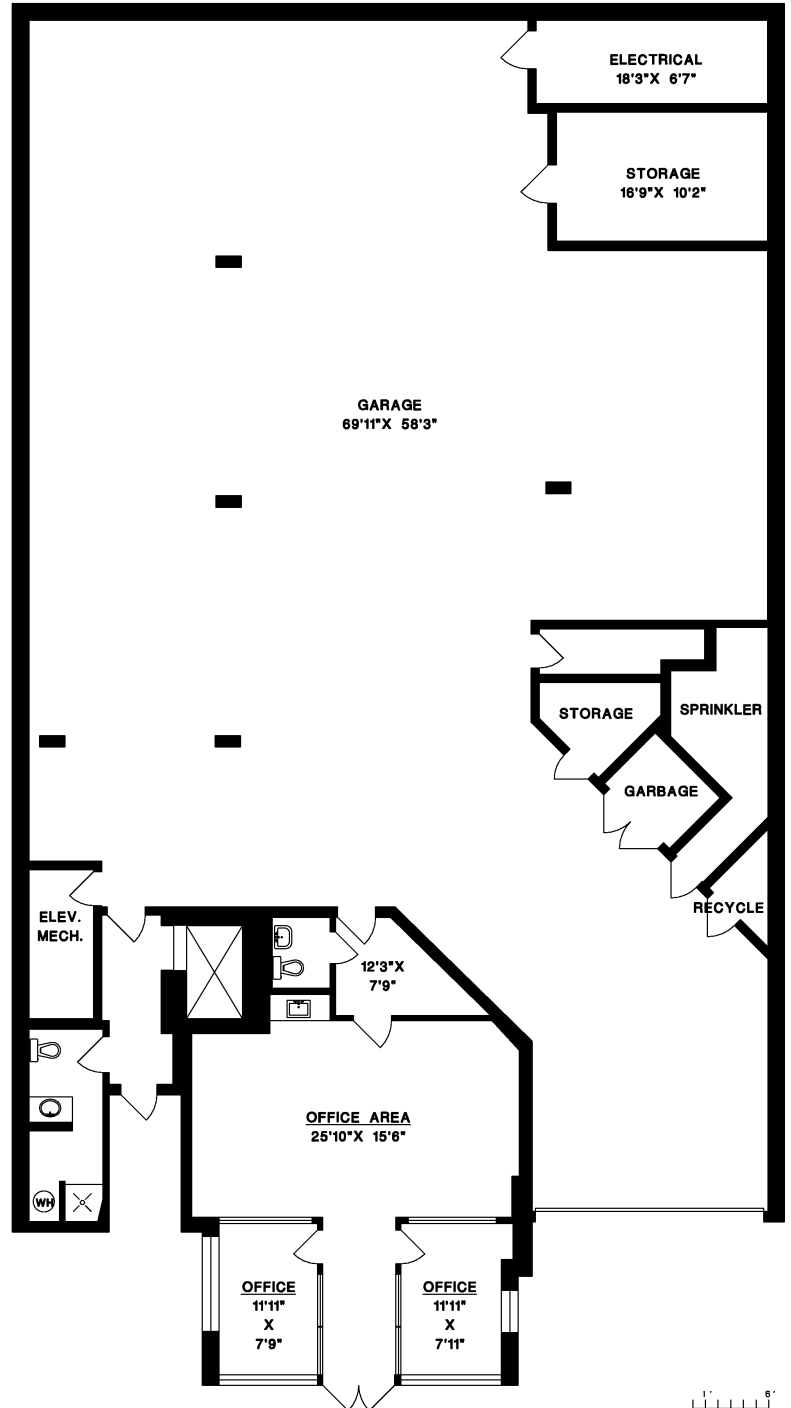
**TOTAL 11,074 SQ.FT.**



UPPER FLOOR



MAIN FLOOR



LOWER FLOOR

1" = 6'  
SCALE