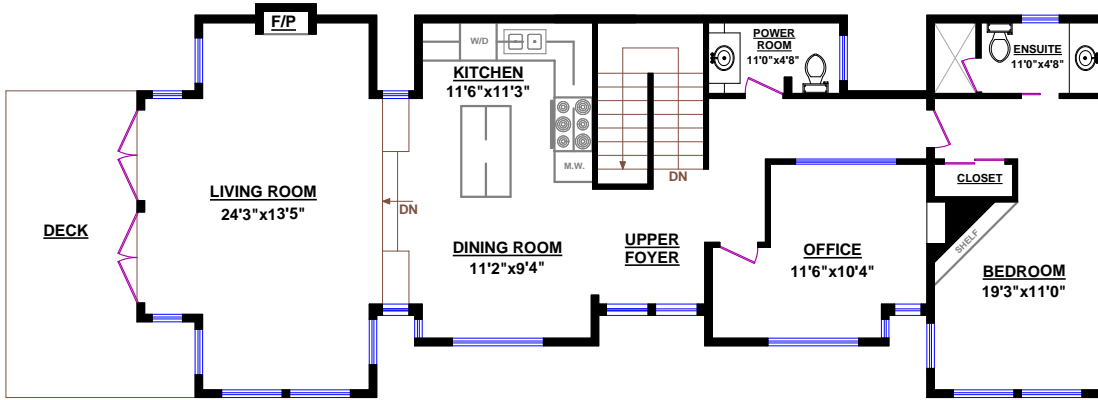
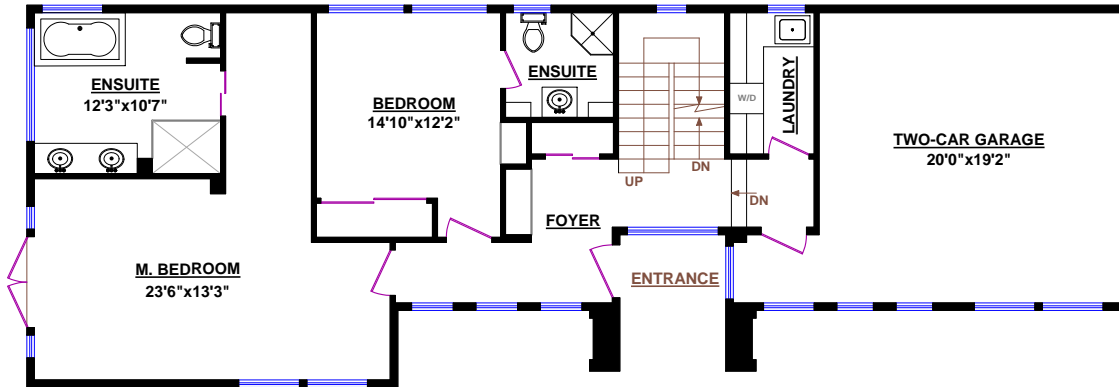


**CLARENCE DEBELLE**  
**Angell Hasman & Associates**  
**Tel.: 604-726-5780**  
**www.clarencedebelle.com**

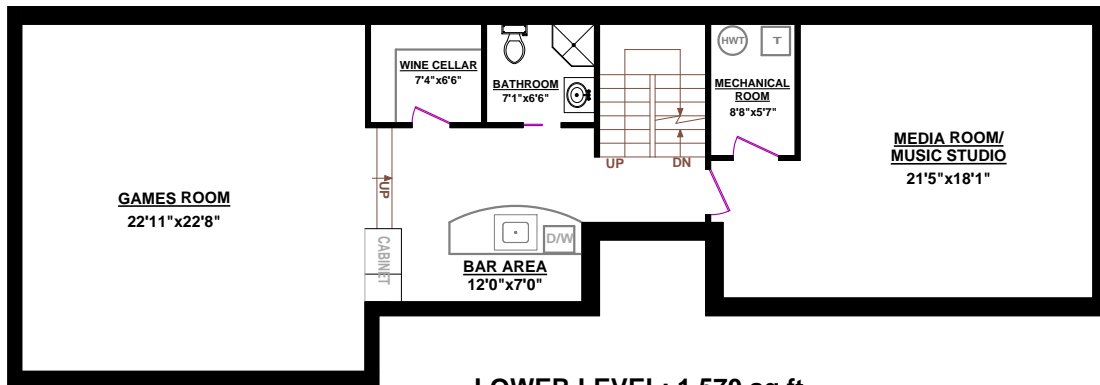


**UPPER LEVEL: 1,395 sq.ft.**



**MAIN FLOOR: 1,114 sq.ft.**

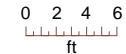
**GARAGE: 444 sq.ft.**



**LOWER LEVEL: 1,570 sq.ft.**

**937 23rd STREET, WEST VANCOUVER**

<b>TOTALS*</b>		<b>OTHER AREAS*:</b>
Main Floor:	1,114 sq.ft.	Garage: 444 sq.ft.
Upper Level:	1,395 sq.ft.	
Lower Level:	1,570 sq.ft.	
<b>GRAND TOTAL:</b>	<b>4,079 sq.ft.</b>	



© Vancouver Realty Support Group Inc., (604) 761-7919  
 www.floorplansvancouver.com

\* All room dimensions and square footage calculations for this house were made based on provided blueprints and may vary from the dimensions of the rooms and square footage of the house as built. Square Footage may include lower height ceiling areas and unfinished areas.