

2956 PALMERSTON AVENUE  
WEST VANCOUVER, BC

Clarence Debelle

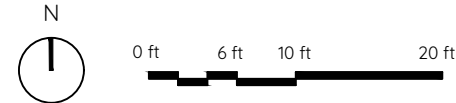
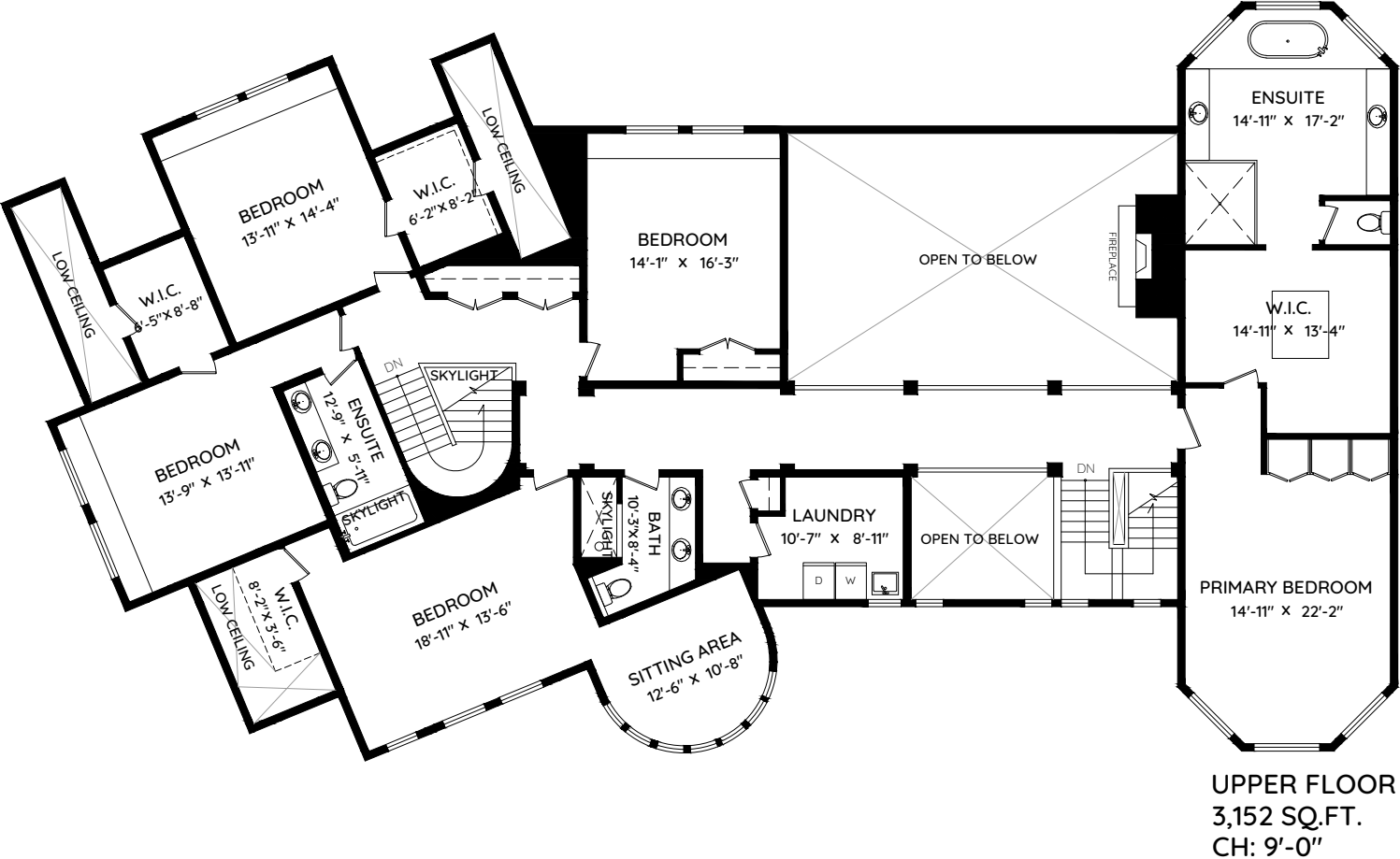
Personal Real Estate Corporation

Greater Vancouver's Pre-Eminent Luxury and Family Home Real Estate Agent

clarence@clarencedebelle.com

604.726.5780

|       |               |        |              |
|-------|---------------|--------|--------------|
| MAIN  | 3,635 SQ.FT.  | GARAGE | 1445 SQ.FT.  |
| UPPER | 3,152 SQ.FT.  | PATIO  | 1391 SQ.FT.  |
| LOWER | 3,498 SQ.FT.  | TOTAL  | 2,836 SQ.FT. |
| TOTAL | 10,285 SQ.FT. |        |              |



The floor plan and measurements are approximate, typically within +/- 2%. These are intended strictly for advertising purposes. They may encompass unfinished areas and are not intended for architectural or construction applications. There may be variances in the numbers if there were restrictions on property access or if taking precise measurements at the time of measuring isn't feasible. E&O insured.