

# OPTIMUM

## FLOOR PLAN DESIGNS

Condos:

The total square footage calculation includes measuring 3" past the wall for any walls shared with other condos and extends to the exterior of the non-shared walls (exterior of the building).

The dimension of each room is calculated from interior wall to interior wall, giving the potential buyer an idea of what type/ size of furniture is suitable for each room.

Any space with a ceiling height of less than 4' is not included in the total square footage, although the space will be noted on the floor plan. For sloped ceilings, only the space with a ceiling height of 4' and higher will be included in the total square footage.

Stairs will be included in the total square footage for each floor, which includes the floor space below the stairs as well as the space on the stairs.

Areas that are open to the floor below are not included in the total square footage such as double heighted ceilings.

If there are any questions. Please don't hesitate to contact us!

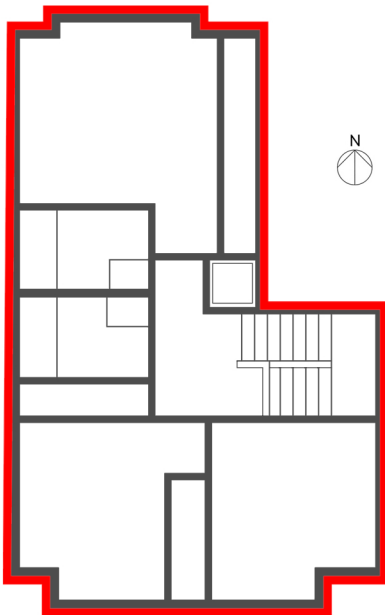
### #302-2135 Heritage Park Lane, North Vancouver

3 bedrooms + 2 1/2 bathrooms

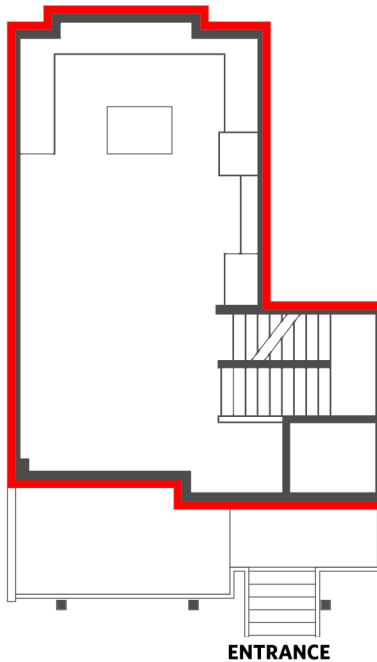
Lower Floor:	346 sq.ft.
Main Floor:	526 sq.ft.
Upper Floor:	680 sq.ft.
<b>Total Interior:</b>	<b>1,552 sq.ft.</b>

Garage:	310 sq.ft.
Exterior Living:	127 sq.ft.

**Upper Floor - 680 sq.ft.**  
Ceiling height - 8' 0"



**Main Floor - 526 sq.ft.**  
Ceiling height - 9' 0"



**Lower Floor - 346 sq.ft.**  
Ceiling height - 8' 2"

