

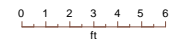
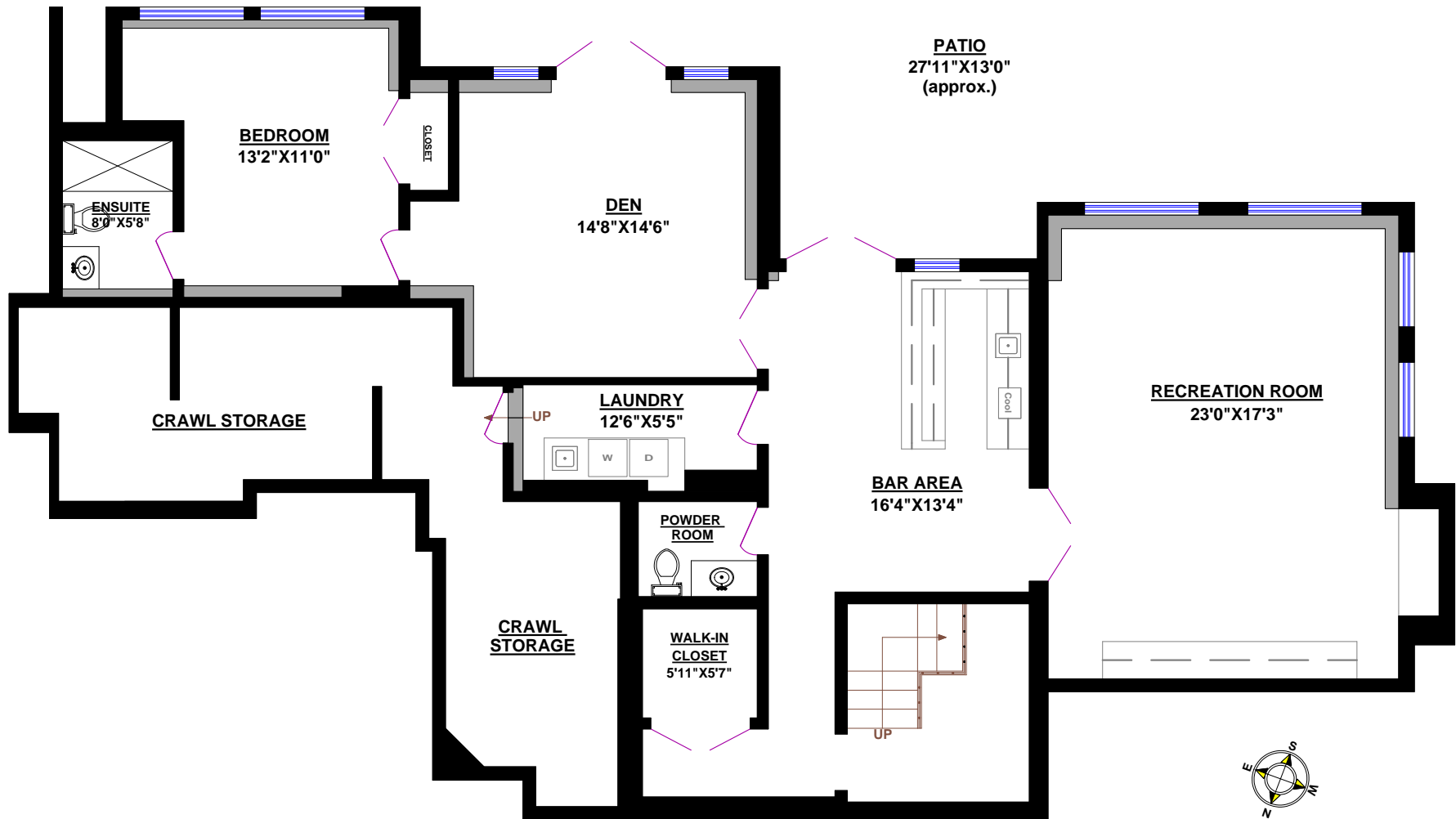
778 ANDOVER CRESCENT, WEST VANCOUVER

TOTALS	
Main Floor (finished):	2,664 sq.ft.
Upper Level (finished):	2,654 sq.ft.
Lower Level (finished):	1,662 sq.ft.
TOTAL FINISHED:	6,980 sq.ft.
Upper Level (unfinished):	22 sq.ft.
GRAND TOTAL:	7,002 sq.ft.

OTHER AREAS:	
Garage:	820 sq.ft.
Crawl Storage (Main):	840 sq.ft.
Crawl Storage (Lower):	387 sq.ft.
Deck (Upper):	1,073 sq.ft.
Deck (Main):	1,065 sq.ft.

PATIO
36'7"X13'4"
(approx.)

PATIO
27'11"X13'0"
(approx.)



LOWER LEVEL