

Clarence DeBelle

B.Econ., LL.B.



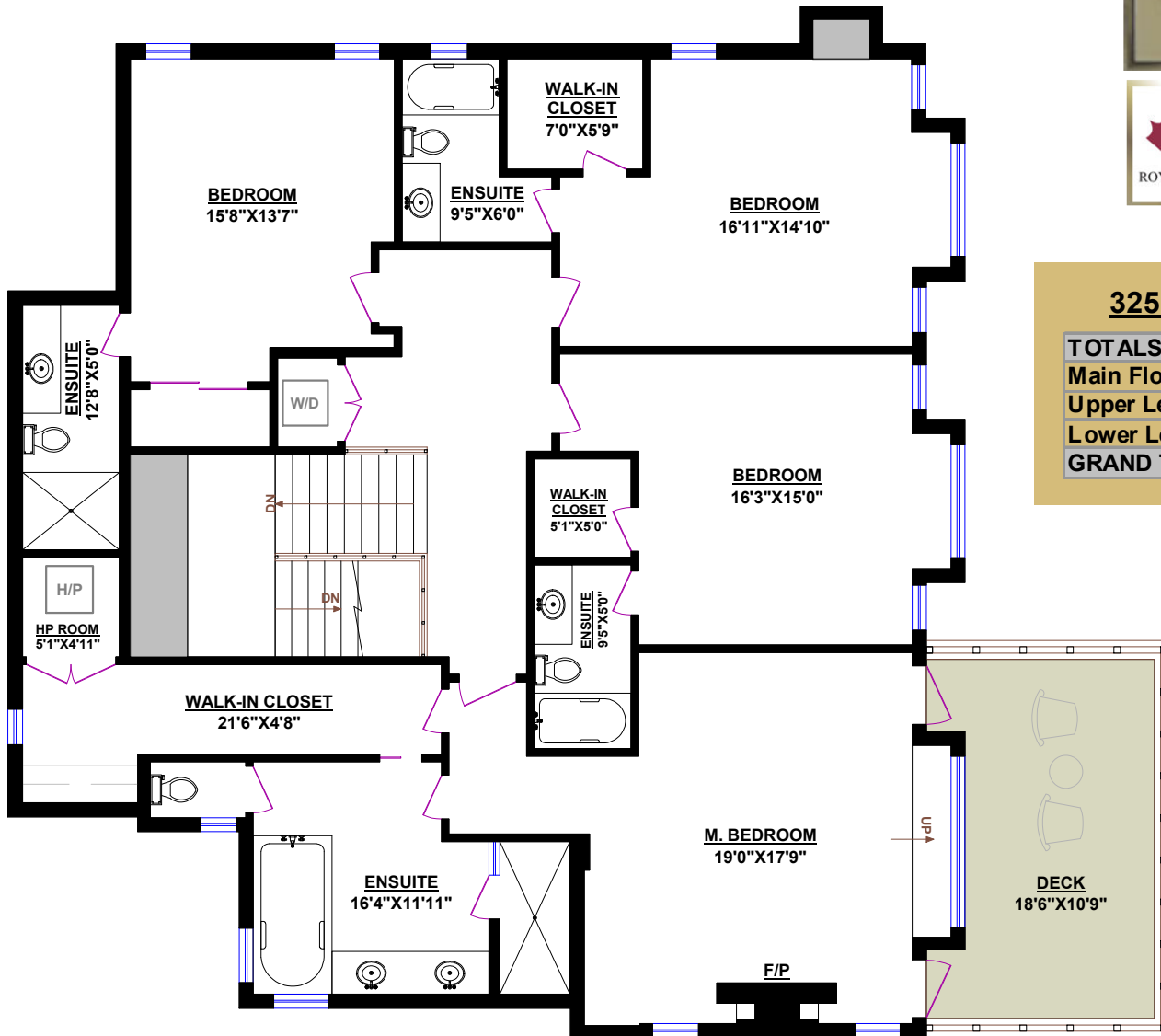
Tel.: 604-726-5780

www.clarencedebelle.com

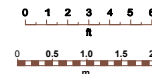
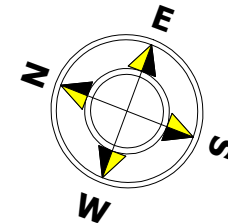
3255 MATHERS AVENUE, WEST VANCOUVER

TOTALS	
Main Floor:	2,281 sq.ft.
Upper Level:	2,258 sq.ft.
Lower Level:	2,635 sq.ft.
GRAND TOTAL:	7,174 sq.ft.

OTHER AREAS:	
Garage:	804 sq.ft.
Deck:	196 sq.ft.
Patio:	406 sq.ft.



UPPER LEVEL



© Vancouver Realty Support Group Inc., (604) 761-7919



www.floorplansvancouver.com
PREMIER PRODUCTS AND SERVICES