

**CLARENCE DEBELLE**  
**Angell Hasman & Associates**

Tel.: 604-726-5780

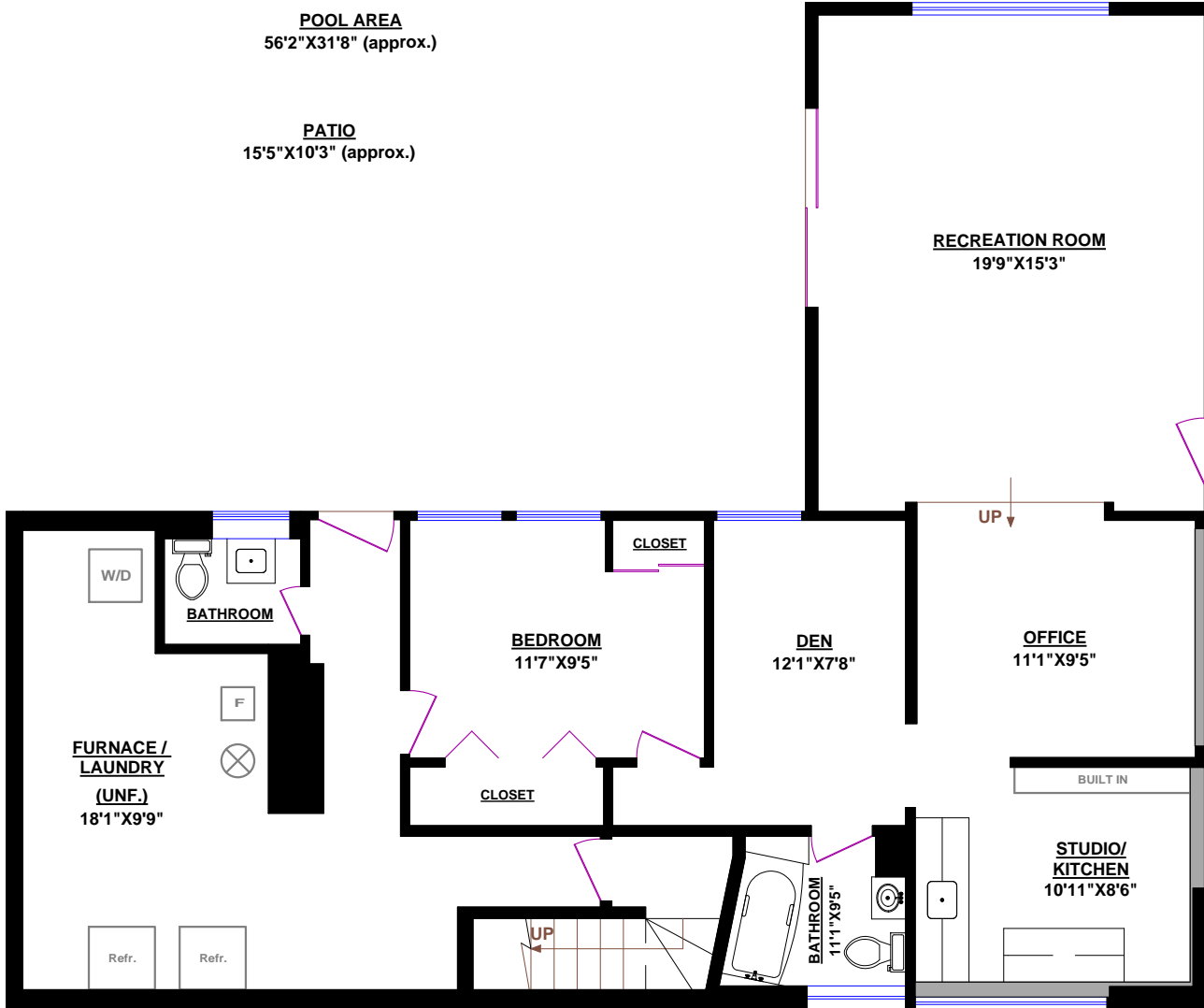
www.clarencedebelle.com

**1580 MATHERS AVENUE, WEST VANCOUVER**

**TOTALS**

Main Floor (finished): 2,019 sq.ft.  
 Lower Level (finished): 975 sq.ft.  
 TOTAL FINISHED: 2,994 sq.ft.  
 Lower Level (unfinished): 307 sq.ft.  
 GRAND TOTAL: 3,301 sq.ft.

**OTHER AREAS:**  
 Deck: 209 sq.ft.  
 Patio: 251 sq.ft.



**LOWER LEVEL**

