

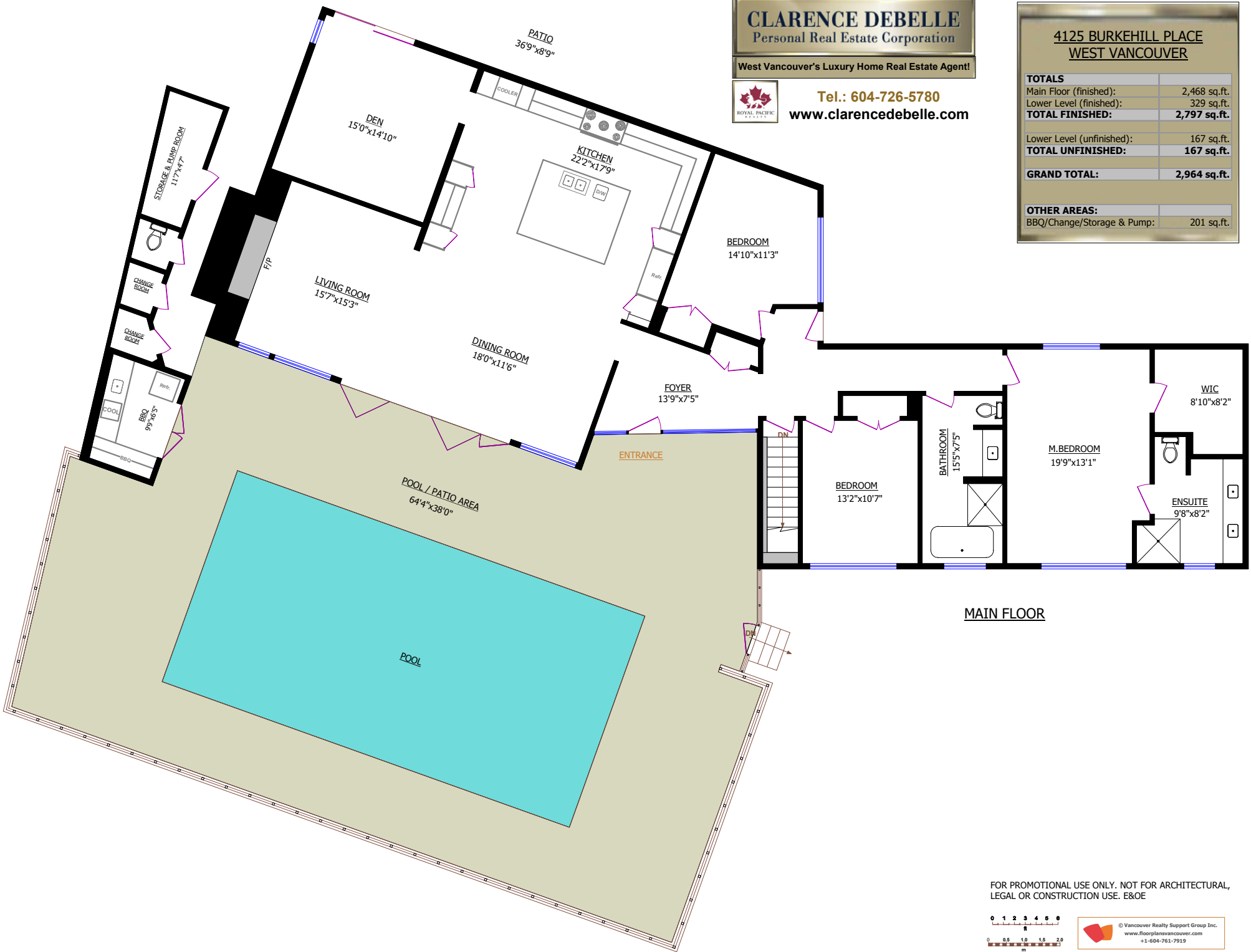
**CLARENCE DEBELLE**  
 Personal Real Estate Corporation  
 West Vancouver's Luxury Home Real Estate Agent!



Tel.: 604-726-5780  
 www.clarencedebelle.com

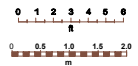
**4125 BURKEHILL PLACE  
 WEST VANCOUVER**

TOTALS	
Main Floor (finished):	2,468 sq.ft.
Lower Level (finished):	329 sq.ft.
<b>TOTAL FINISHED:</b>	<b>2,797 sq.ft.</b>
Lower Level (unfinished):	167 sq.ft.
<b>TOTAL UNFINISHED:</b>	<b>167 sq.ft.</b>
<b>GRAND TOTAL:</b>	<b>2,964 sq.ft.</b>
OTHER AREAS:	
BBO/Change/Storage & Pump:	201 sq.ft.



**MAIN FLOOR**

FOR PROMOTIONAL USE ONLY. NOT FOR ARCHITECTURAL, LEGAL OR CONSTRUCTION USE. E&OE



© Vancouver Realty Support Group Inc.  
 www.floorplansvancouver.com  
 +1-604-761-7919