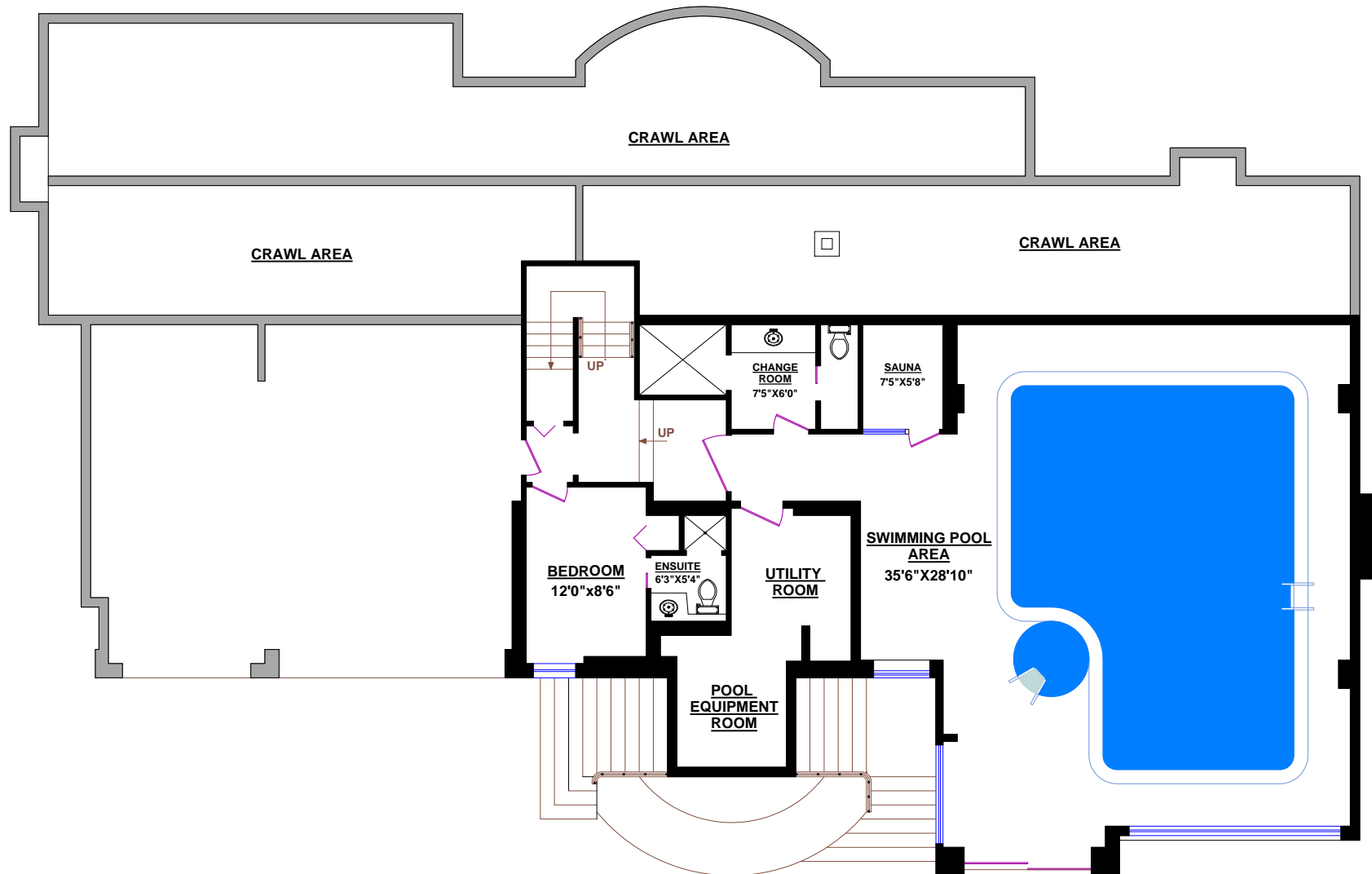


4556 WOODGREEN DRIVE, WEST VANCOUVER

TOTALS*

Main Floor: 3,526 sq.ft.
Upper Level: 2,858 sq.ft.
Lower Level: 2,004 sq.ft.
GRAND TOTAL: 8,388 sq.ft.



0 2 4 6
ft

LOWER LEVEL: 2,004 Square ft

* All room dimensions and square footage calculations for this house were made based on provided blueprints and may vary from the dimensions of the rooms and square footage of the house as built. Square Footage may include lower height ceiling areas, openings in floors not associated with stairs, or openings in floors exceeding the area of associated stairs, or unfinished areas.

© Vancouver Realty Support Group Inc., (604) 761-7919

www.floorplansvancouver.com