

4670 Piccadilly Road - West Vancouver, BC

CLARENCE DEBELLE
Personal Real Estate Corporation

West Vancouver's Luxury Home Real Estate Agent!

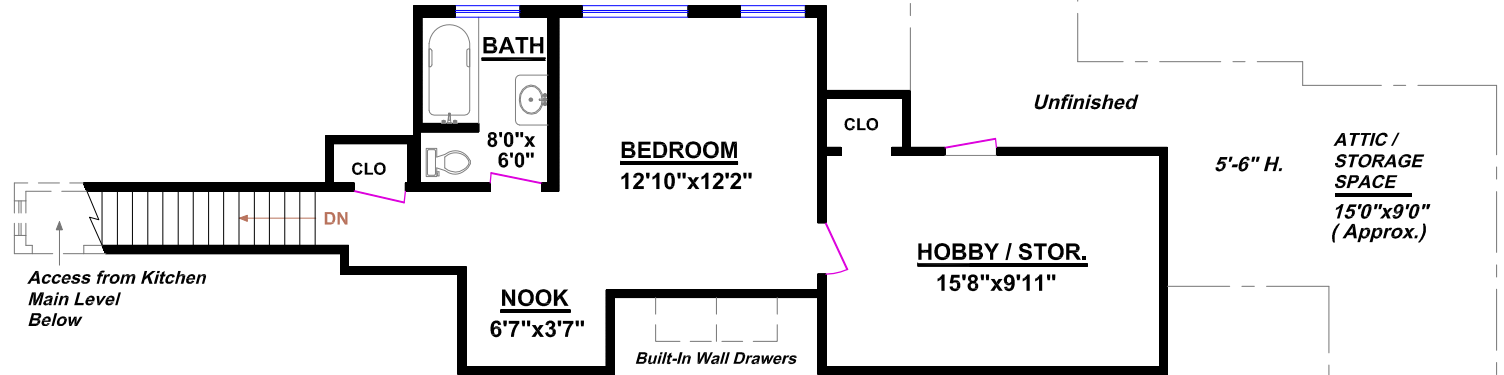


Tel.: 604-726-5780
www.clarencedebelle.com

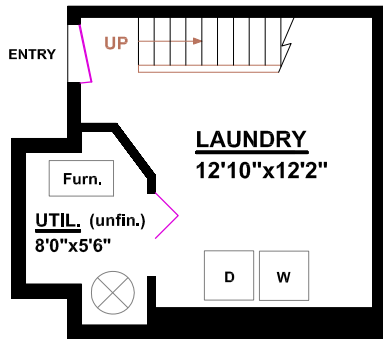
TOTALS	
Main Level (finished)	3058 sq.ft.
Main Level (unfinished)	0 sq.ft.
MAIN LEVEL TOTAL:	3058 sq.ft.
Upper Level (finished)	*534 sq.ft.
Upper Level (unfinished)	0 sq.ft.
UPPER LEVEL TOTAL:	*534 sq.ft.
Lower Level (finished)	*209 sq.ft.
Lower Level (unfinished)	*43 sq.ft.
LOWER LEVEL TOTAL:	*252 sq.ft.
GRAND TOTAL:	** 3844 sq.ft.

* Low-Level Ceiling (under 7'0")
** Includes Low-Level Ceiling Areas

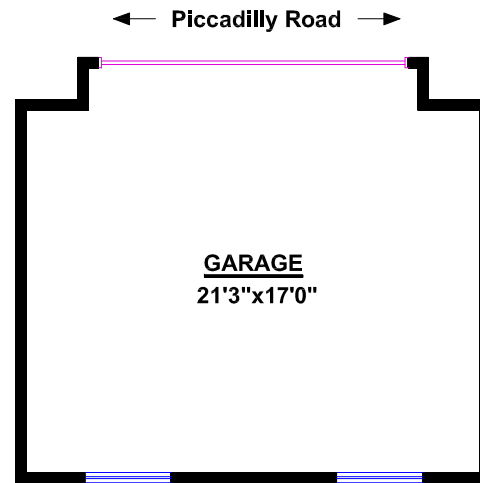
OTHER AREAS:	
Garage (detached):	434 sq.ft.
Shop / Storage (under garage):	400 sq.ft.
Attic Storage Space (approx.):	604 sq.ft.
Patio (approx.):	435 sq.ft.



UPPER LEVEL

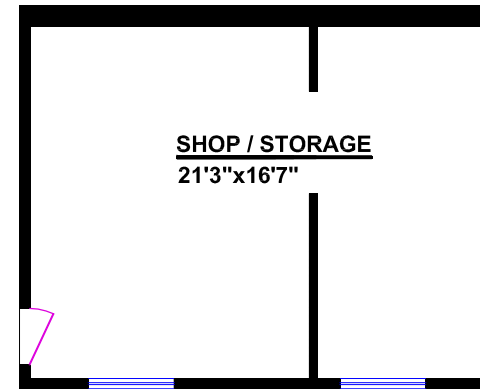


LOWER LEVEL



DETACHED GARAGE

(Location Shown not Relative To The House)



LOCATED UNDER GARAGE

