

Clarence DeBelle

B.Econ., LL.B.

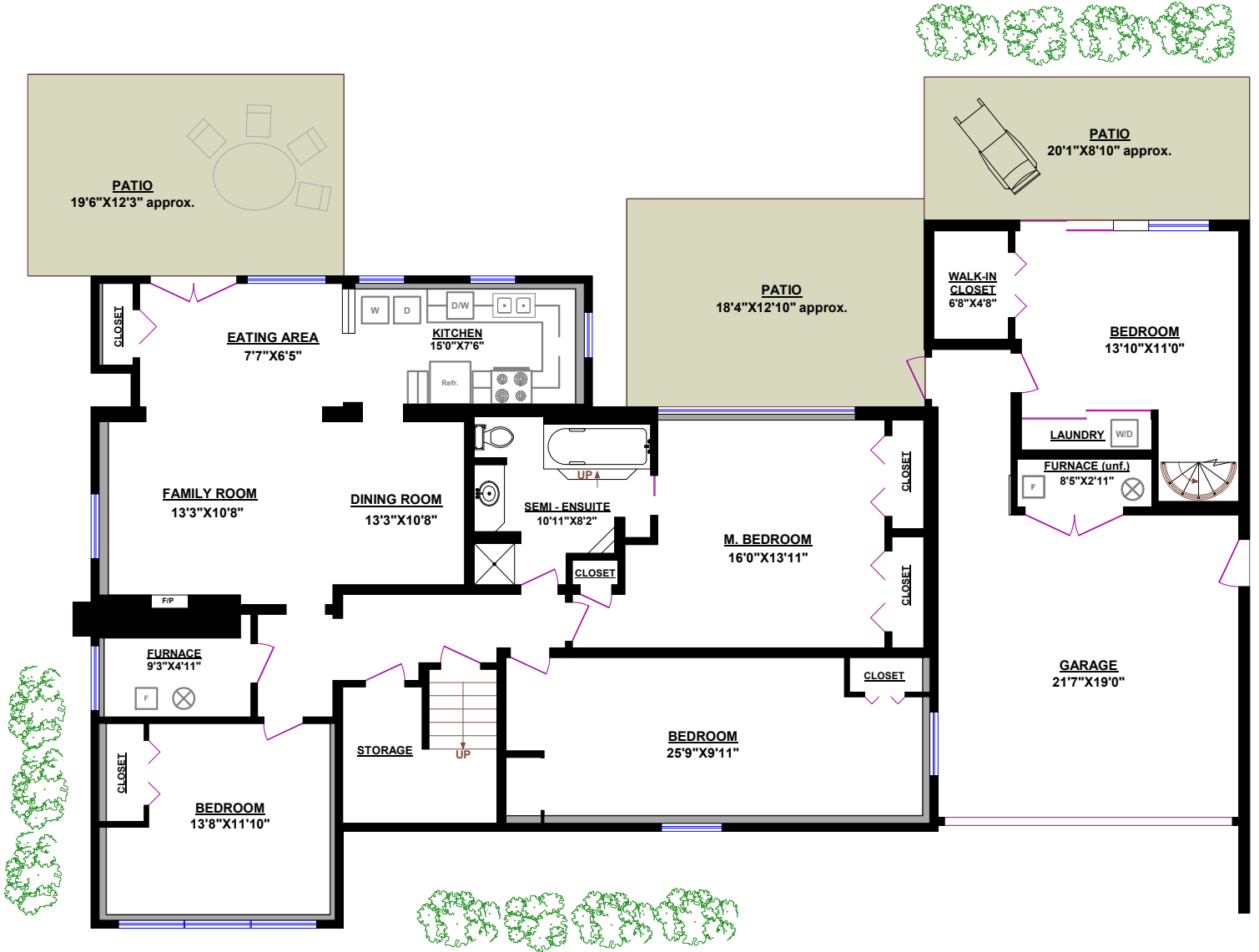


Tel.: 604-726-5780
www.clarencedebelle.com

510 STEVENS DRIVE, WEST VANCOUVER

TOTALS	
Main Floor (finished):	2,321 sq.ft.
Lower Level (finished):	1,984 sq.ft.
TOTAL FINISHED:	4,305 sq.ft.
Lower Level (unfinished):	30 sq.ft.
TOTAL UNFINISHED:	30 sq.ft.
GRAND TOTAL:	4,335 sq.ft.

OTHER AREAS:	
Garage:	417 sq.ft.
Deck:	183 sq.ft.
Deck:	178 sq.ft.
Deck:	38 sq.ft.



LOWER LEVEL

