

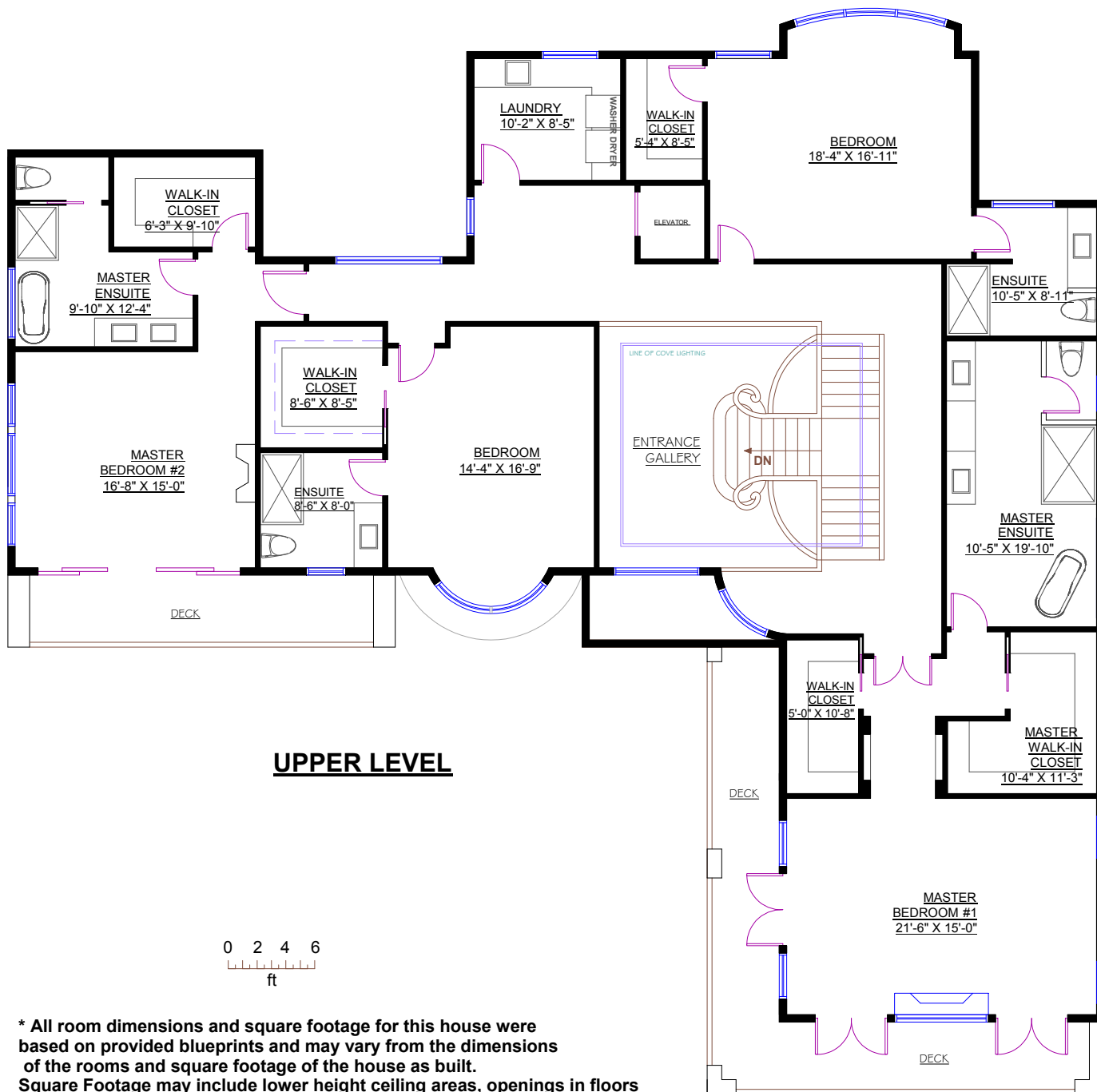


Tel.: 604-726-5780
 www.clarencedebelle.com

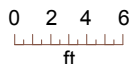
655 KING GEORGES WAY, WEST VANCOUVER

TOTALS*	
Main Floor:	3,195 sq.ft.
Upper Level:	3,111 sq.ft.
Lower Level:	3,224 sq.ft.
GRAND TOTAL:	9,530 sq.ft.

OTHER AREAS*:	
Double Garage:	490 sq.ft.
Single Garage:	330 sq.ft.



UPPER LEVEL



* All room dimensions and square footage for this house were based on provided blueprints and may vary from the dimensions of the rooms and square footage of the house as built. Square Footage may include lower height ceiling areas, openings in floors not associated with stairs, or openings in floors exceeding the area of associated stairs, or unfinished areas.