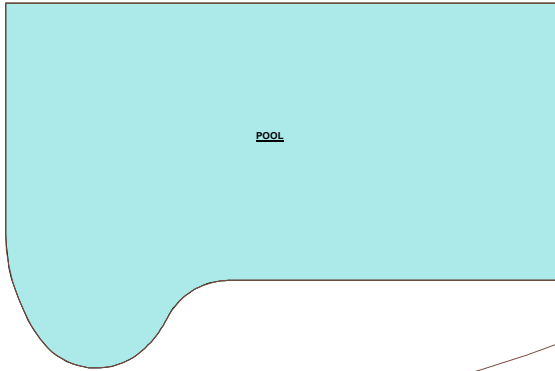


for illustrative purposes only

**POOL & PATIO AREA**  
68'11"X40'0"  
approx.



**POOL**

**MECH.**  
9'5"X7'4"

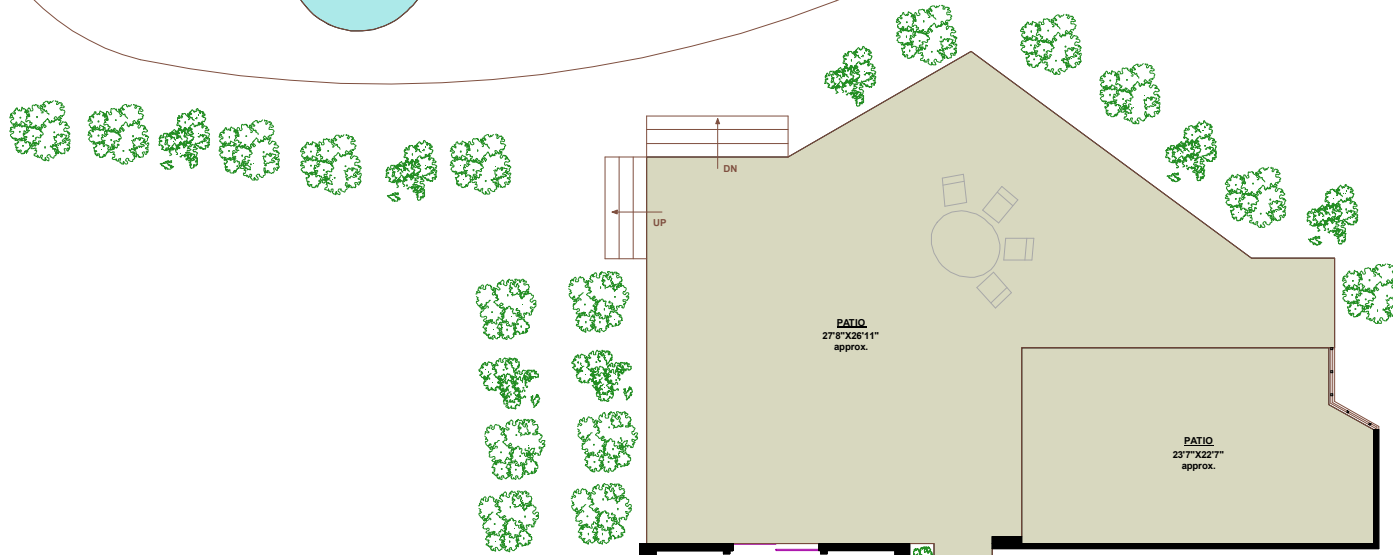
### 2938 PALMERSTON AVENUE, WEST VANCOUVER

#### TOTALS

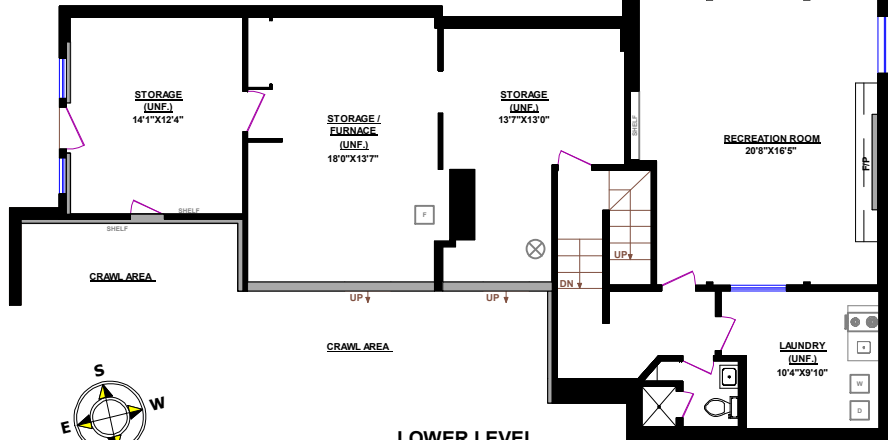
Main Floor (finished): 2,046 sq.ft.  
 Upper Level (finished): 1,864 sq.ft.  
 Lower Level (finished): 587 sq.ft.  
**TOTAL FINISHED:** 4,497 sq.ft.  
 Lower Level (unfinished): 823 sq.ft.  
**GRAND TOTAL:** 5,320 sq.ft.

#### OTHER AREAS:

Storage: 149 sq.ft.  
 Mech. Room: 83 sq.ft.



for illustrative purposes only



#### LOWER LEVEL

**CLARENCE DEBELLE**  
**Angell Hasman & Associates**  
 Tel.: 604-726-5780  
 www.clarencedebelle.com

