

# CLARENCE DEBELLE Angell Hasman & Associates

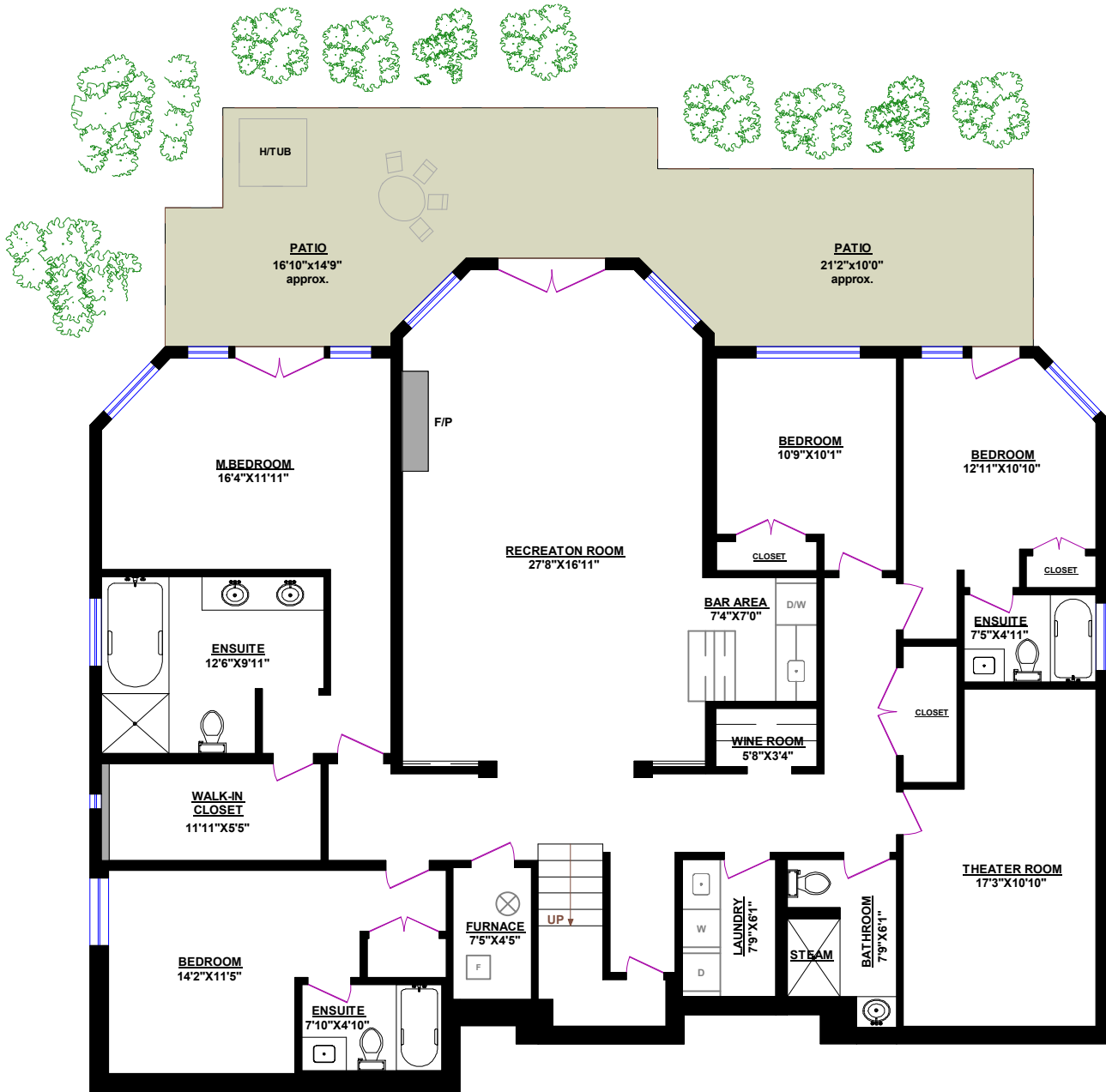
Tel.: 604-726-5780

www.clarencedebelle.com

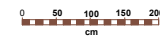
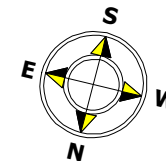
## 2370 CHIPPENDALE ROAD, WEST VANCOUVER

**TOTALS**  
 Main Floor (finished): 1,873 sq.ft.  
 Lower Level (finished): 2,356 sq.ft.  
**TOTAL FINISHED:** 4,229 sq.ft.  
 TOTAL UNFINISHED: 0 sq.ft.  
**GRAND TOTAL:** 4,229 sq.ft.

**OTHER AREAS:**  
 Garage: 518 sq.ft.  
 Deck: 489 sq.ft.



**LOWER LEVEL**



© Vancouver Realty Support Group Inc., (604) 761-7919  
 www.floorplansvancouver.com