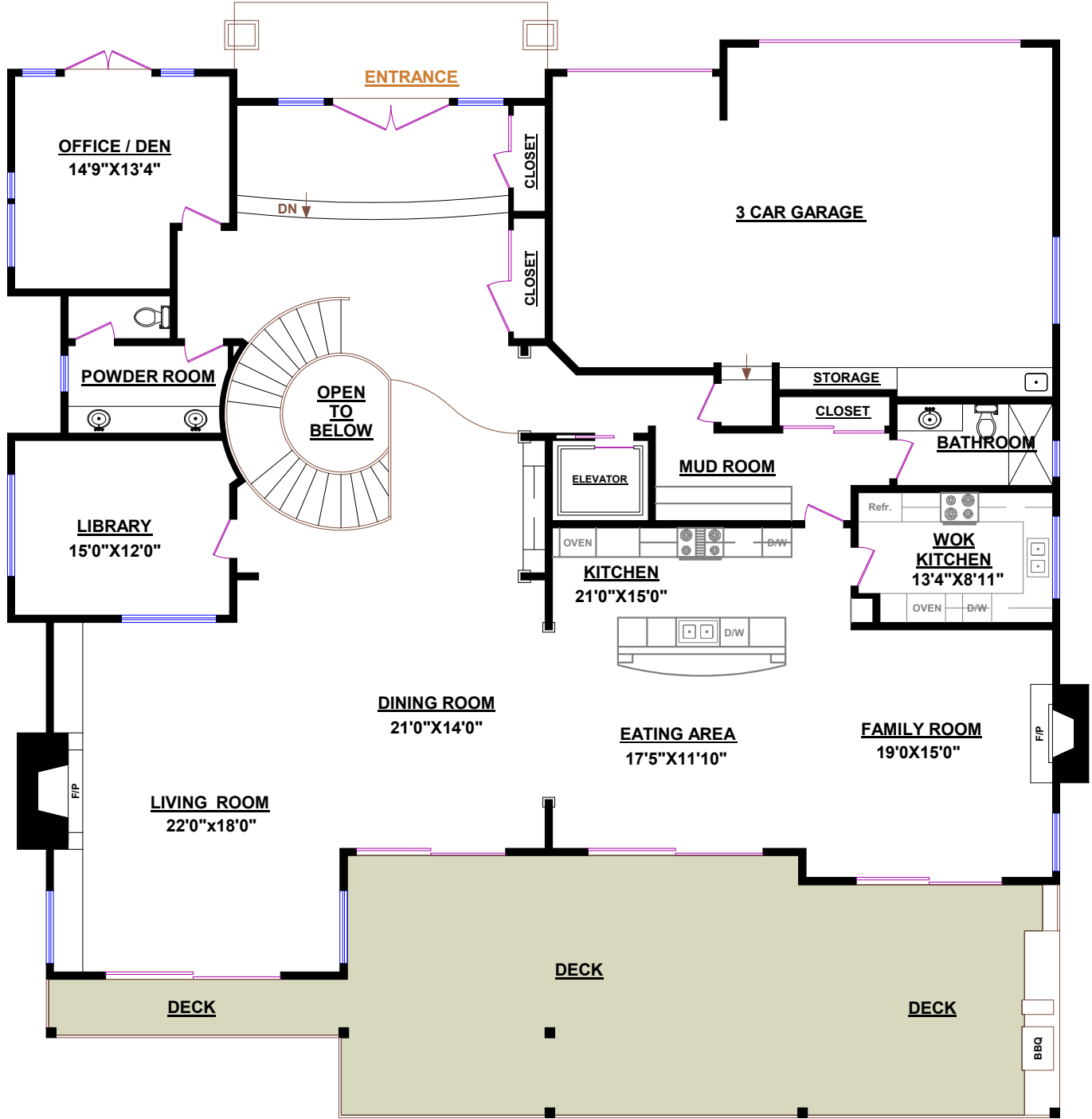




Tel.: 604-726-5780  
www.clarencedebelle.com

780 GREENWOOD DRIVE, WEST VANCOUVER		OTHER AREAS:	
<b>TOTALS*</b>		<b>GARAGE:</b>	822 SQ.FT.
UPPER FLOOR:	3,219 SQ.FT.	<b>DECK (MAIN):</b>	853 SQ.FT.
MIDDLE FLOOR:	2,672 SQ.FT.	<b>DECK (SECOND):</b>	931 SQ.FT.
LOWER FLOOR:	3,158 SQ.FT.		
<b>TOTAL :</b>	<b>9,049 SQ.FT.</b>		



**UPPER FLOOR**

\* All room dimensions and square footage for this house were based on provided blueprints and other sources and may vary from the dimensions of the rooms and square footage of the house as built. Square Footage may include lower height ceiling areas, openings in floors not associated with stairs, or openings in floors exceeding the area of associated stairs, or unfinished areas.

