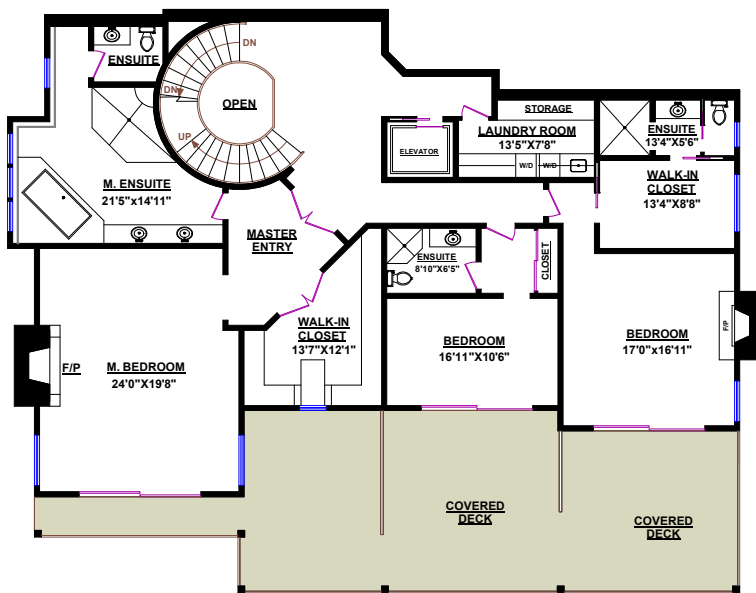
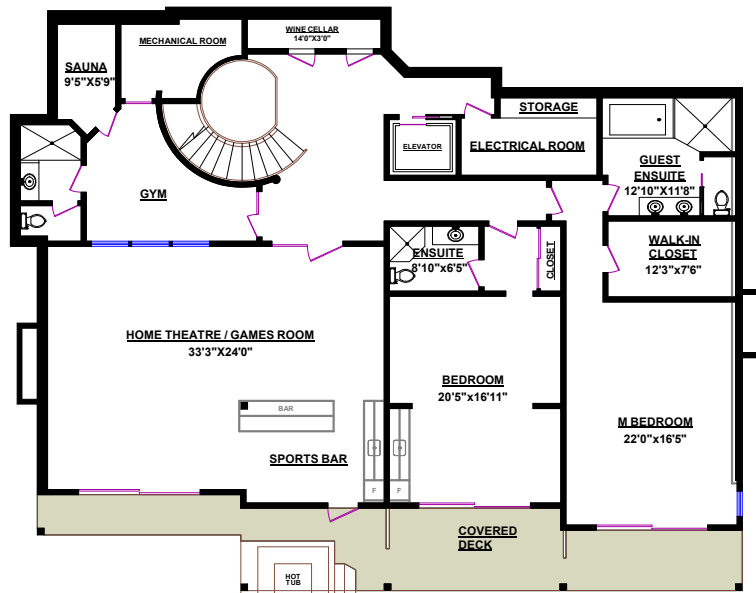


UPPER FLOOR



MIDDLE FLOOR



LOWER FLOOR

# Clarence DeBelle

B.Econ., LL.B.

West Vancouver's Luxury Home Real Estate Agent!



Tel.: 604-726-5780  
www.clarencedebelle.com

## 780 GREENWOOD DRIVE, WEST VANCOUVER

TOTALS*		OTHER AREAS:	
UPPER FLOOR:	3,219 SQ.FT.	GARAGE:	822 SQ.FT.
MIDDLE FLOOR:	2,672 SQ.FT.	DECK (MAIN):	853 SQ.FT.
LOWER FLOOR:	3,158 SQ.FT.	DECK (SECOND):	931 SQ.FT.
TOTAL :	9,049 SQ.FT.		

\* All room dimensions and square footage for this house were based on provided blueprints and other sources and may vary from the dimensions of the rooms and square footage of the house as built. Square Footage may include lower height ceiling areas, openings in floors not associated with stairs, or openings in floors exceeding the area of associated stairs, or unfinished areas.

