

Clarence DeBelle

B.Econ., LL.B.

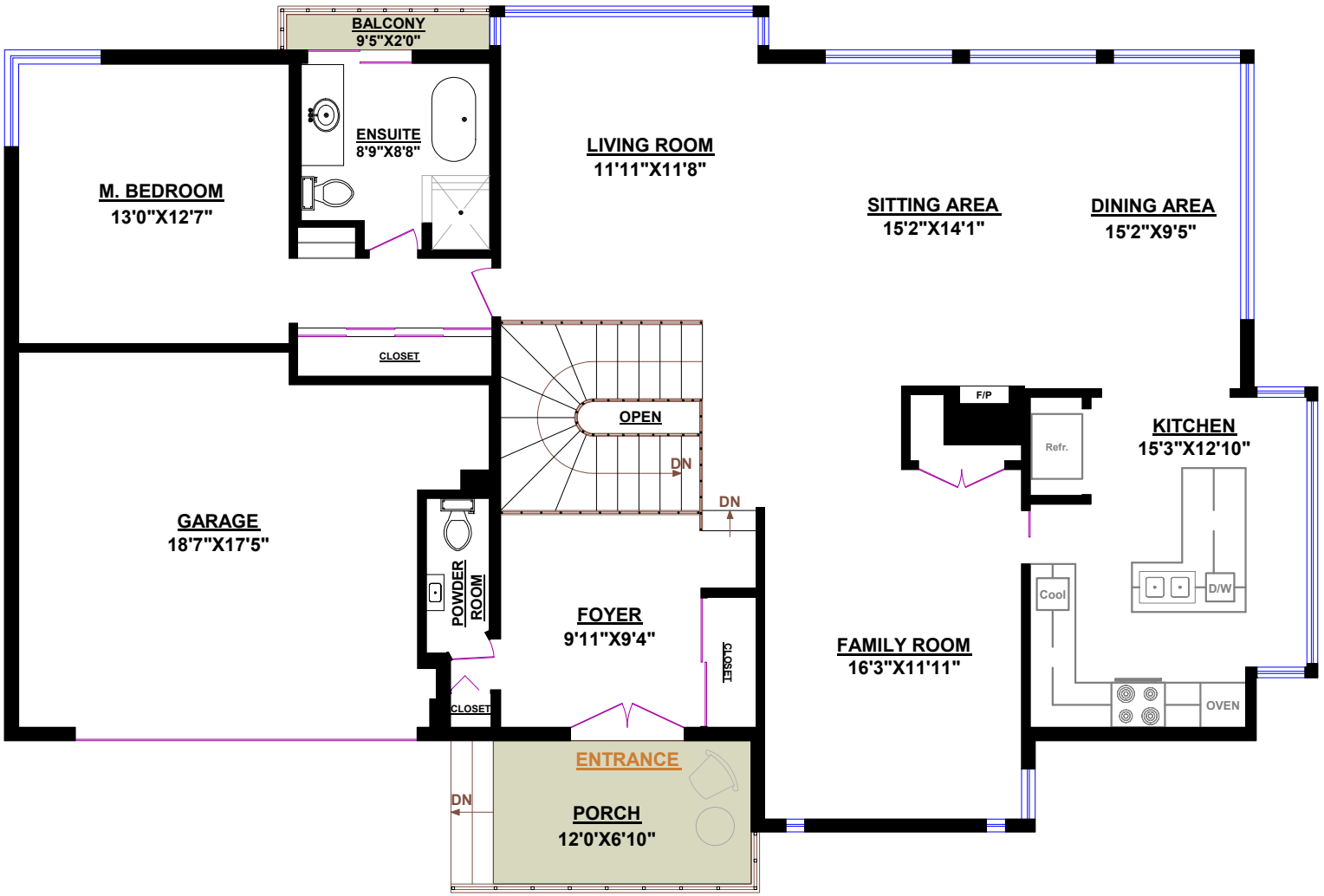
West Vancouver's Luxury Home Real Estate Agent!



Tel.: 604-726-5780
www.clarencedebelle.com

824 YOUNETTE DRIVE, WEST VANCOUVER

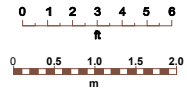
TOTALS		OTHER AREAS:	
Main Floor (finished):	1,621 sq.ft.	Garage:	355 sq.ft.
Lower Level (finished):	1,050 sq.ft.	Deck (Basement):	491 sq.ft.
Basement (finished):	572 sq.ft.	Deck (Lower):	168 sq.ft.
TOTAL FINISHED:	3,243 sq.ft.	Balcony:	19 sq.ft.
Basement (unfinished):	34 sq.ft.	Porch:	82 sq.ft.
TOTAL UNFINISHED:	34 sq.ft.		
GRAND TOTAL:	3,277 sq.ft.		



for illustrative purposes only



MAIN FLOOR



Clarence DeBelle

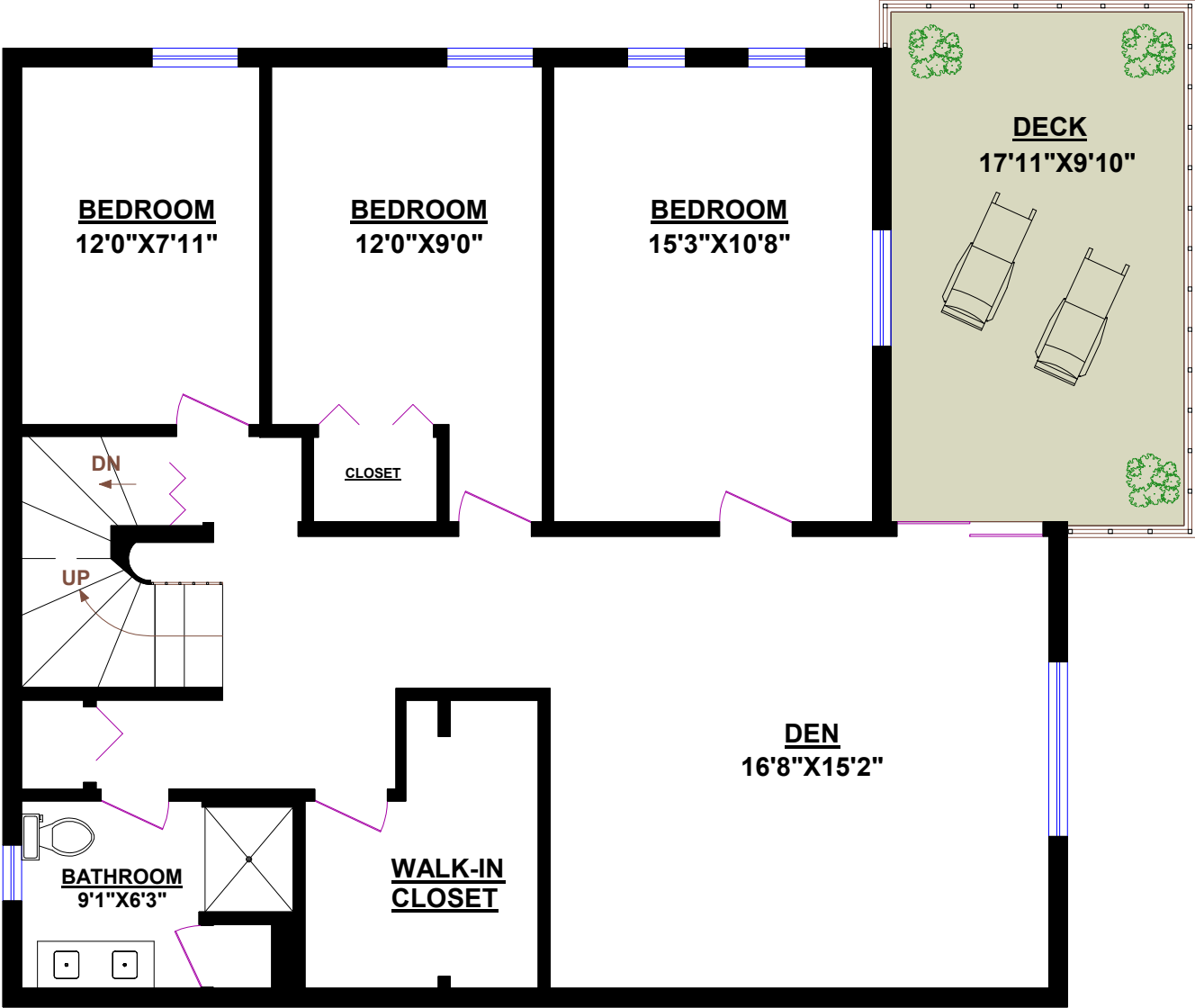
B.Econ., LL.B.

West Vancouver's Luxury Home Real Estate Agent!

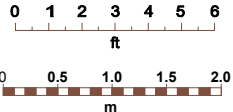


Tel.: 604-726-5780
www.clarencedebelle.com

824 YOUNETTE DRIVE, WEST VANCOUVER		OTHER AREAS:	
TOTALS		Garage:	355 sq.ft.
Main Floor (finished):	1,621 sq.ft.	Deck (Basement):	491 sq.ft.
Lower Level (finished):	1,050 sq.ft.	Deck (Lower):	168 sq.ft.
Basement (finished):	572 sq.ft.	Balcony:	19 sq.ft.
TOTAL FINISHED:	3,243 sq.ft.	Porch:	82 sq.ft.
Basement (unfinished):	34 sq.ft.		
TOTAL UNFINISHED:	34 sq.ft.		
GRAND TOTAL:	3,277 sq.ft.		



LOWER LEVEL

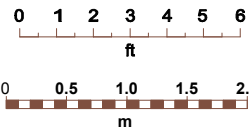




Tel.: 604-726-5780
www.clarencedebelle.com

824 YOUNETTE DRIVE, WEST VANCOUVER

TOTALS		OTHER AREAS:	
Main Floor (finished):	1,621 sq.ft.	Garage:	355 sq.ft.
Lower Level (finished):	1,050 sq.ft.	Deck (Basement):	491 sq.ft.
Basement (finished):	572 sq.ft.	Deck (Lower):	168 sq.ft.
TOTAL FINISHED:	3,243 sq.ft.	Balcony:	19 sq.ft.
Basement (unfinished):	34 sq.ft.	Porch:	82 sq.ft.
TOTAL UNFINISHED:	34 sq.ft.		
GRAND TOTAL:	3,277 sq.ft.		



Clarence DeBelle

B.Econ., LL.B.

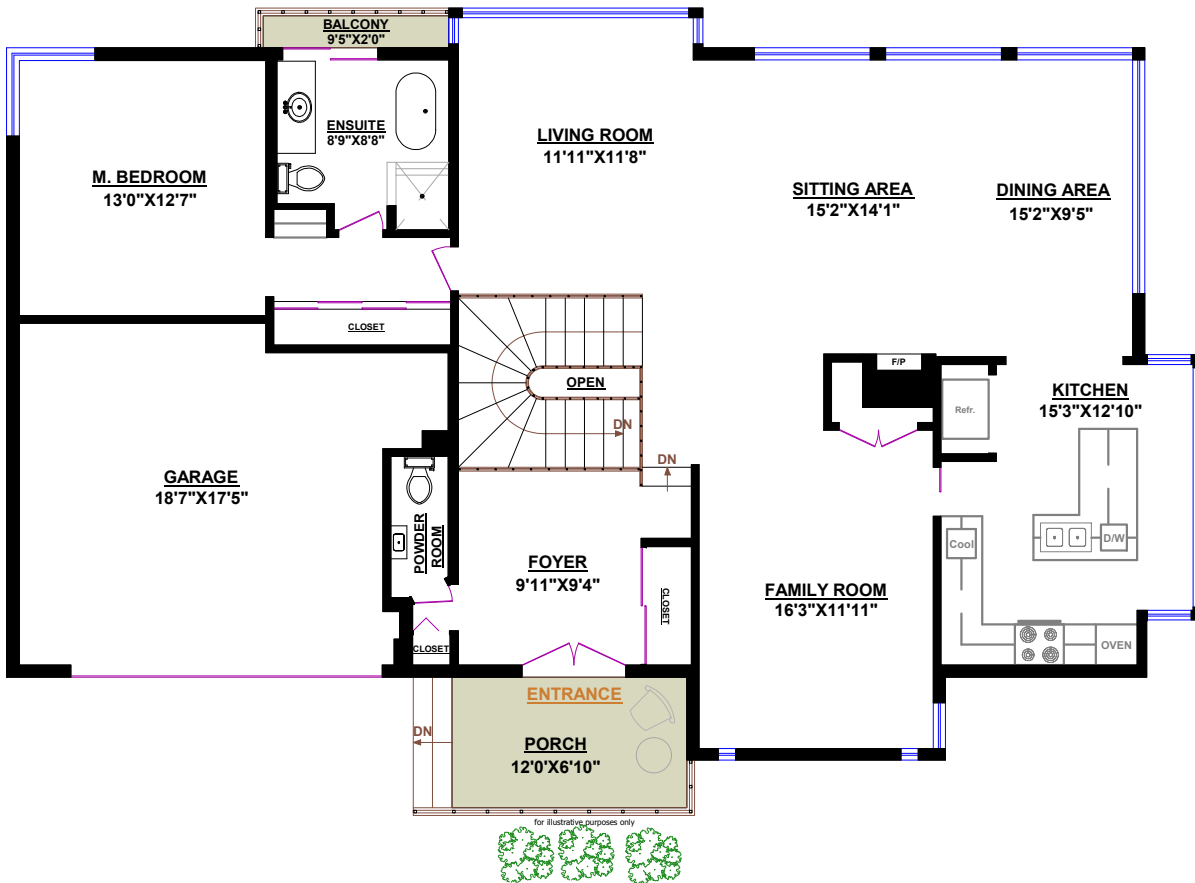
West Vancouver's Luxury Home Real Estate Agent!



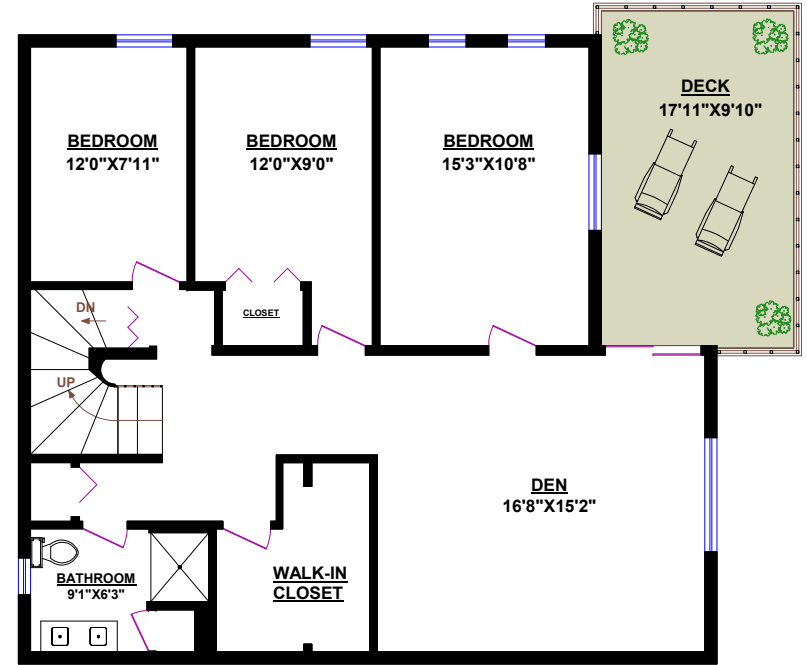
Tel.: 604-726-5780
www.clarencedebelle.com

824 YOUNETTE DRIVE, WEST VANCOUVER

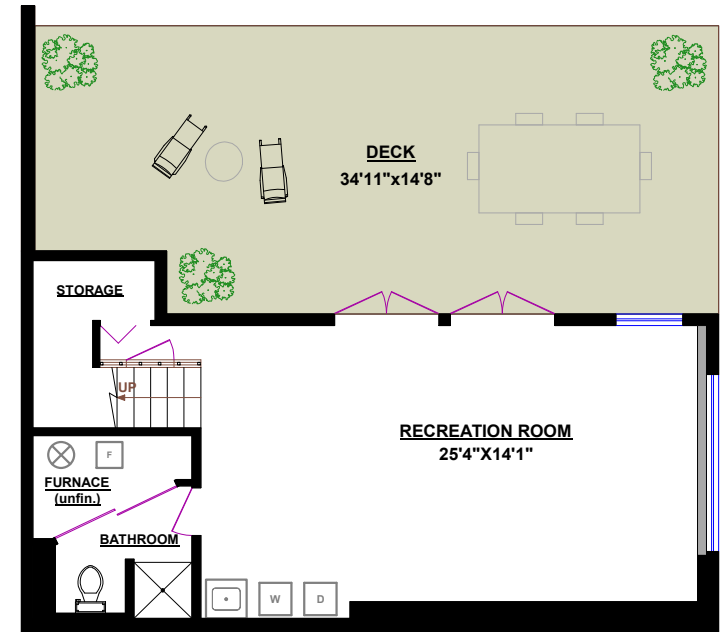
TOTALS		OTHER AREAS:	
Main Floor (finished):	1,621 sq.ft.	Garage:	355 sq.ft.
Lower Level (finished):	1,050 sq.ft.	Deck (Basement):	491 sq.ft.
Basement (finished):	572 sq.ft.	Deck (Lower):	168 sq.ft.
TOTAL FINISHED:	3,243 sq.ft.	Balcony:	19 sq.ft.
Basement (unfinished):	34 sq.ft.	Porch:	82 sq.ft.
TOTAL UNFINISHED:	34 sq.ft.		
GRAND TOTAL:	3,277 sq.ft.		



MAIN FLOOR



LOWER LEVEL



BASEMENT

