

# Clarence DeBelle

B.Econ., L.L.B.

West Vancouver's Luxury Home Real Estate Agent!

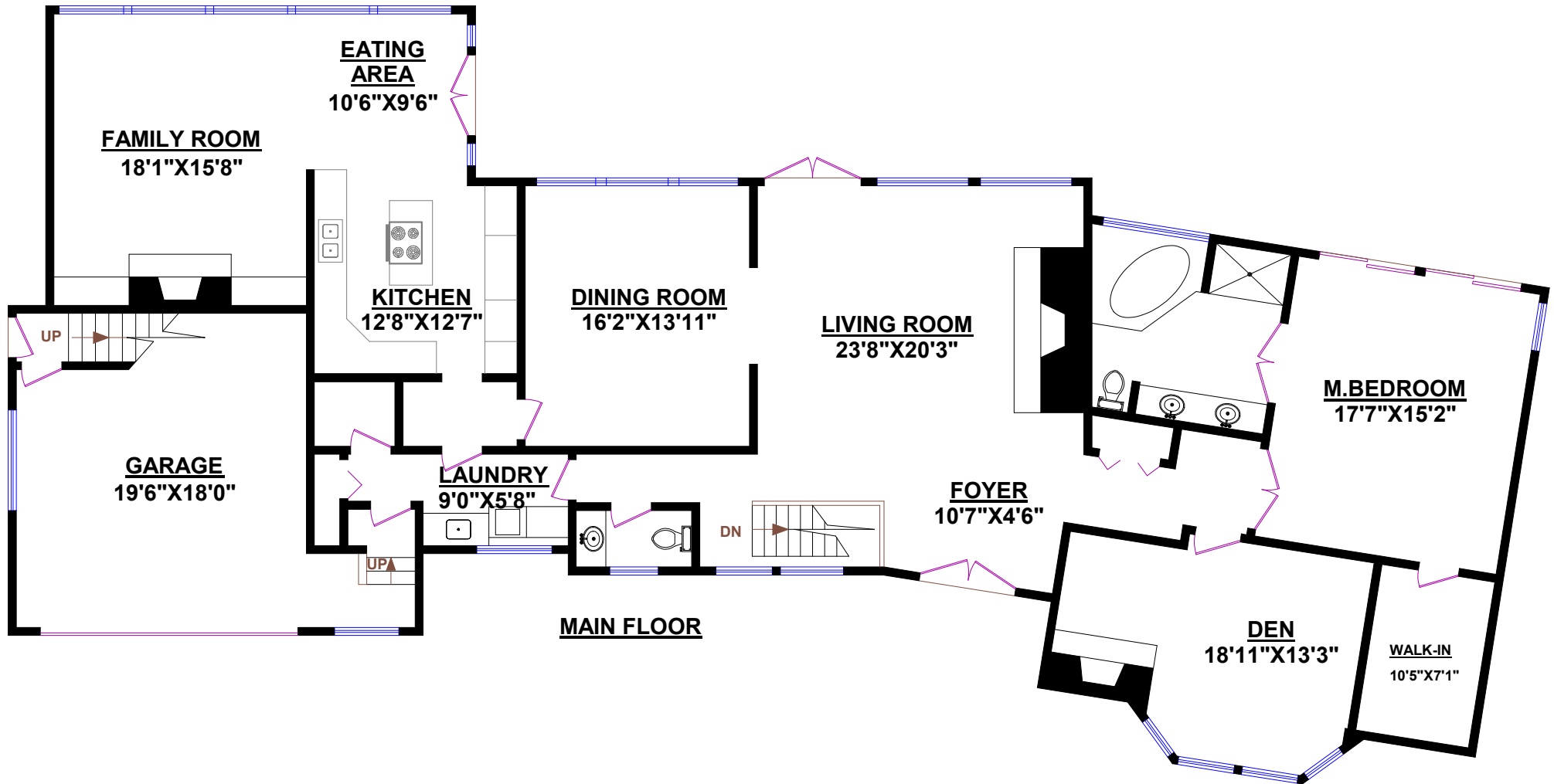


Tel.: 604-726-5780  
www.clarencedebelle.com

## 925 EYRE MOUNT DRIVE, WEST VANCOUVER

TOTALS	
MAIN FLOOR:	2,469 SQ.FT.
UPPER FLOOR:	268 SQ.FT.
LOWER FLOOR:	1,268 SQ.FT.
SUITE:	638 SQ.FT.
TOTAL:	4,643 SQ.FT.

OTHER AREAS:	
Garage:	389 SQ.FT.



0 2 4 6  
ft