

Clarence DeBelle

B.Econ., LL.B.

West Vancouver's Luxury Home Real Estate Agent!

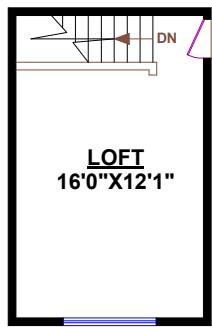


Tel.: 604-726-5780
www.clarencedebelle.com

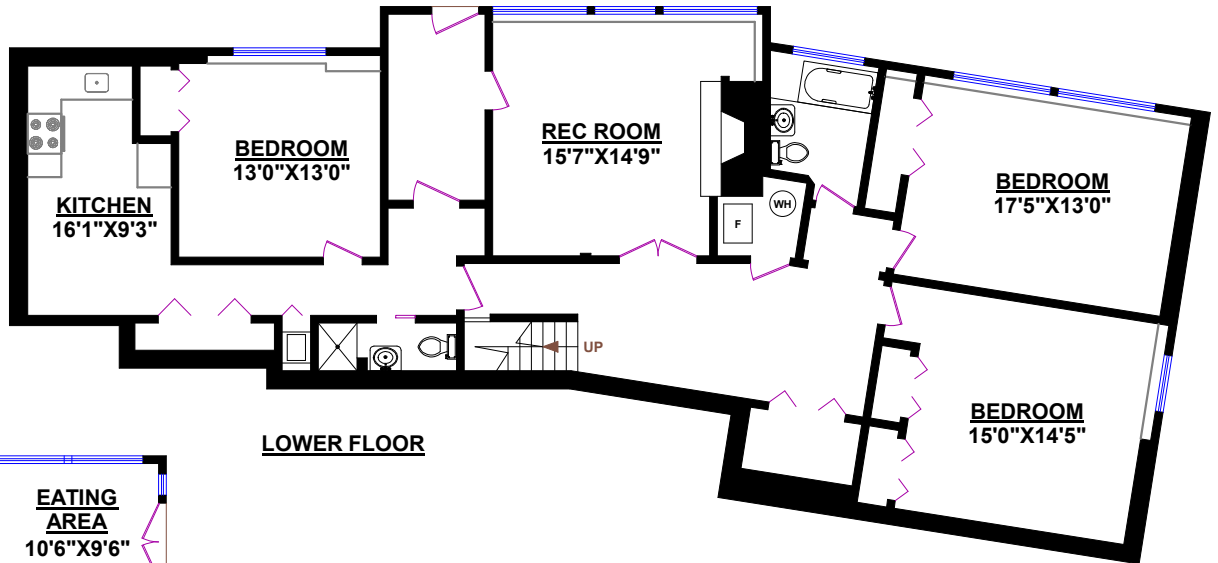
925 EYREMOUNT DRIVE, WEST VANCOUVER

TOTALS	
MAIN FLOOR:	2,469 SQ.FT.
UPPER FLOOR:	268 SQ.FT.
LOWER FLOOR:	1,268 SQ.FT.
SUITE:	638 SQ.FT.
TOTAL:	4,643 SQ.FT.

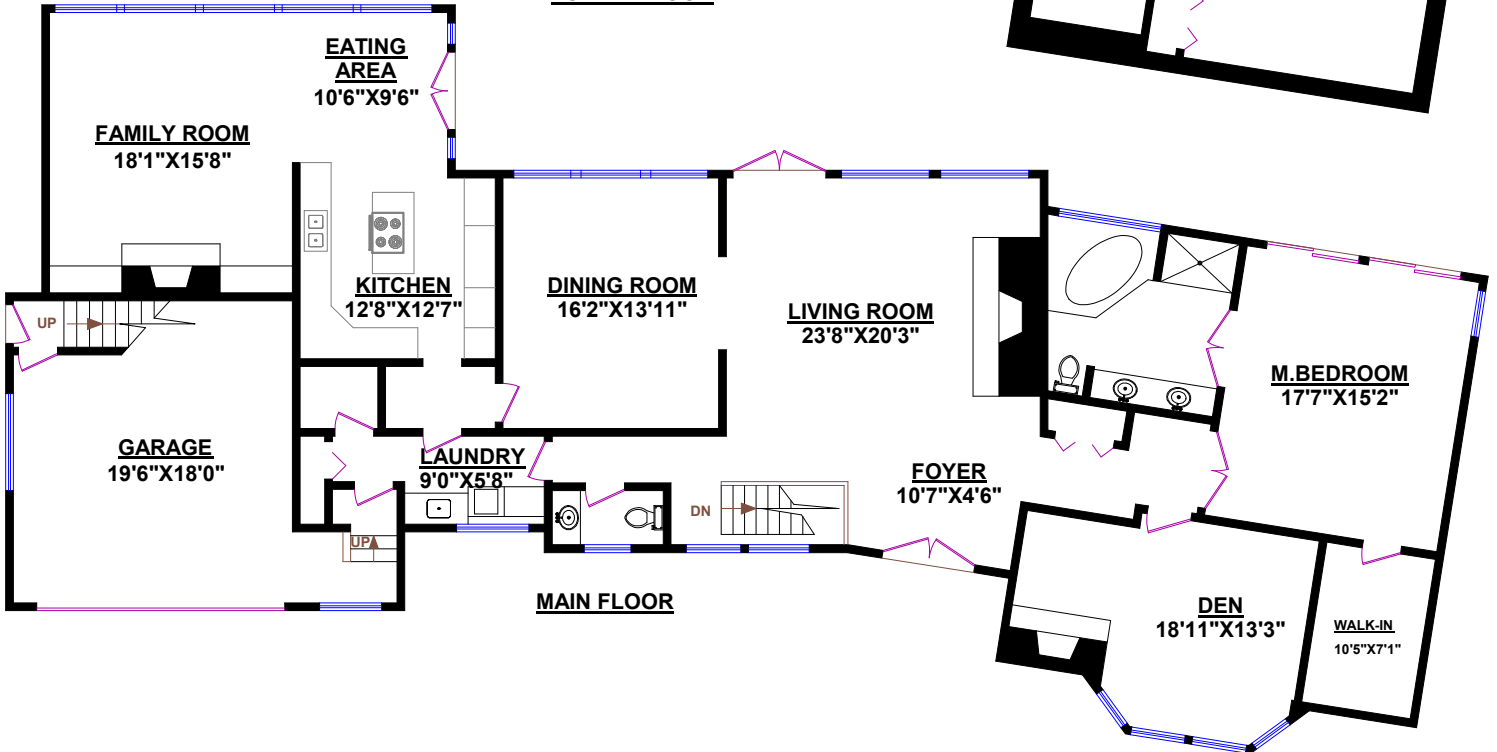
OTHER AREAS:	
Garage:	389 SQ.FT.



UPPER FLOOR



LOWER FLOOR



MAIN FLOOR

