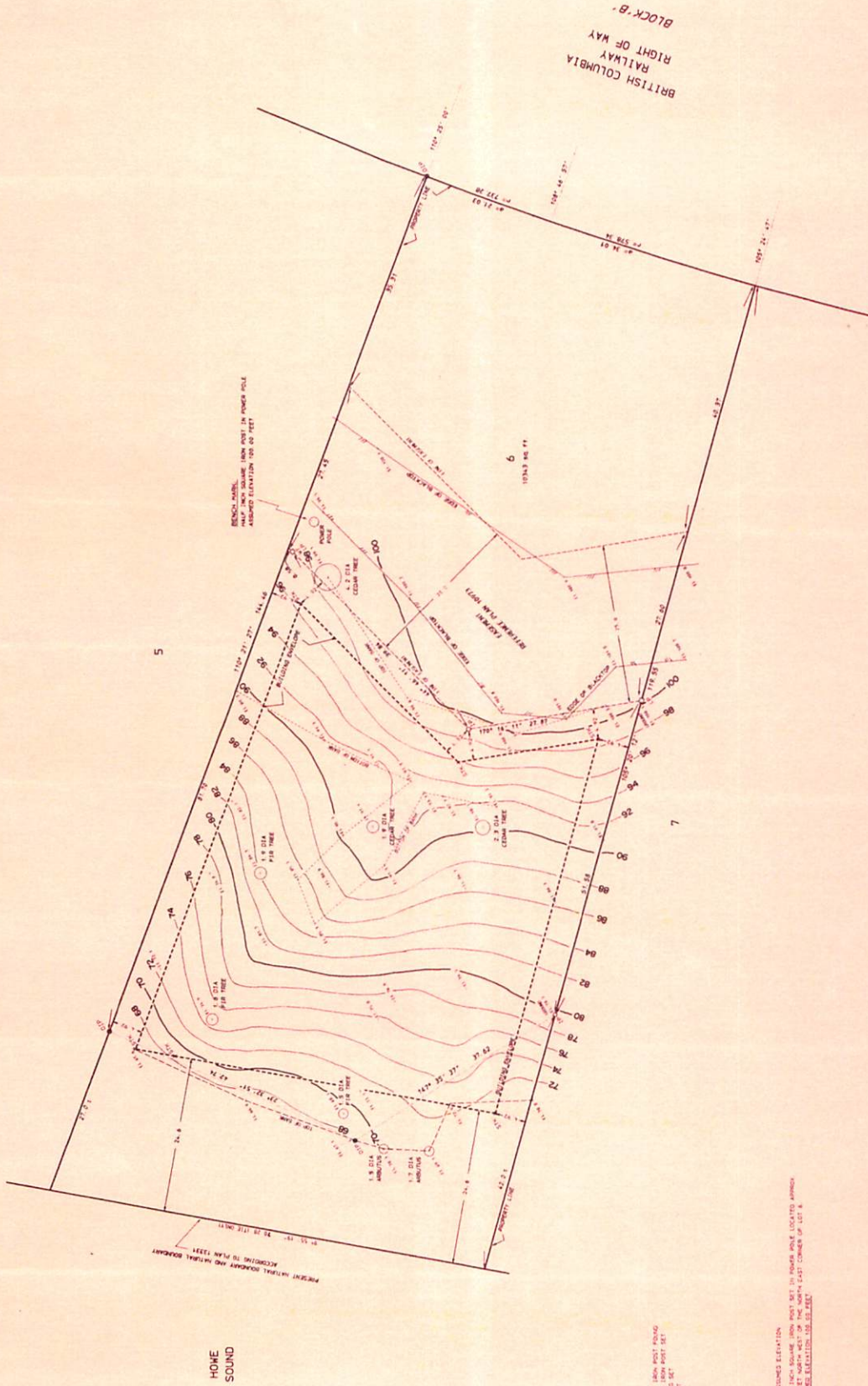


TOPOGRAPHIC SURVEY PLAN OF A PORTION OF LOT 6,
DISTRICT LOT 5883, PLAN 13331

P.I.D. 028-483-217

SCALE 1 INCH = 6 FEET



- LEGEND**
- SURVEY STATION
 - SURVEY STATION
 - SURVEY STATION
 - SURVEY STATION
 - SURVEY STATION
 - SURVEY STATION

ELEVATIONS

ELEVATIONS ARE TO AN ASSUMED ELEVATION

REDSHAW MARK USED FOR 1 INCH BENCH MARK SET IN POWER POLE LOCATED APPROX

REDSHAW MARK USED FOR 6 INCH BENCH MARK SET IN POWER POLE LOCATED APPROX

ADJUSTED ELEVATIONS ARE TO THE

CERTIFIED CORRECT THIS 10TH DAY OF SEPTEMBER 1994

D. Macdonald

B.C.L.S.

NOTE

LAND HEREIN WITHIN INCLUDING THEREON, SEE 589772 L FOR RIGHT OF WAY IN FAVOR OF B.C. RAILWAY AND POWER AUTHORITY. SEE SURVEY N, THEREAFTER.

FOR RESTRICTIVE COVENANT APPLYING TO THE PORTIONS OF LOTS 4, 5 AND 7 REFERRED TO HEREIN IN THIS PLAN, SEE PLAN 13331.

THIS PLAN IS THE COPYRIGHT PROPERTY OF HOBBS, WINTER & MACDONALD, PROFESSIONAL LAND SURVEYORS AND ENGINEERS. REPRODUCTION IS STRICTLY PROHIBITED.

HOBBS, WINTER & MACDONALD,
PROFESSIONAL LAND SURVEYORS AND ENGINEERS,
200-1160 EAST 34TH STREET,
VANCOUVER, B.C. V7L 1B8
TEL: (604) 771-7111 FAX: (604) 771-7112

PB 217 B 1294
PB 2167 B 2032A
MAY 13 1994