

4202 1283 HOWE STREET

VANCOUVER, BC

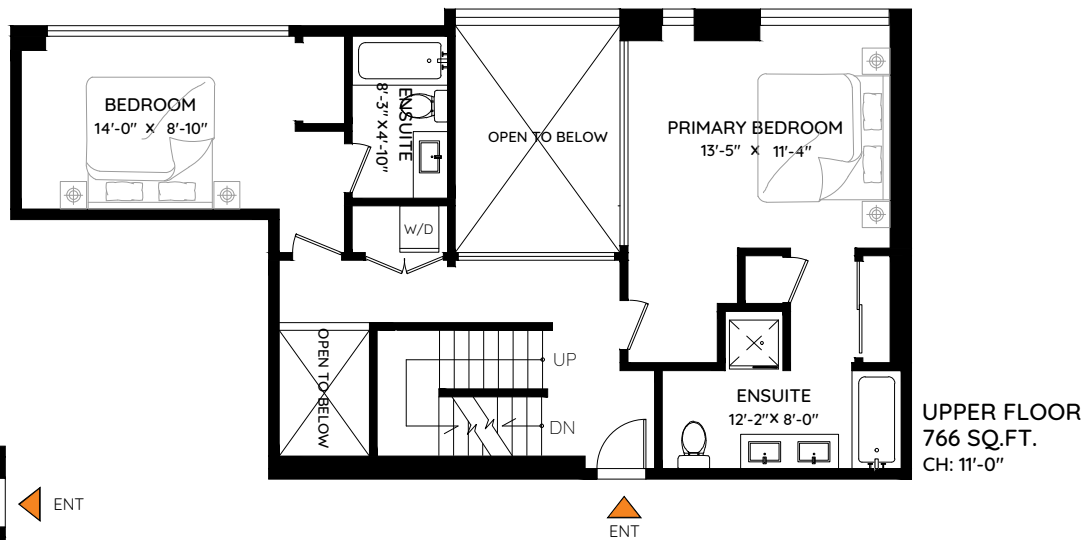
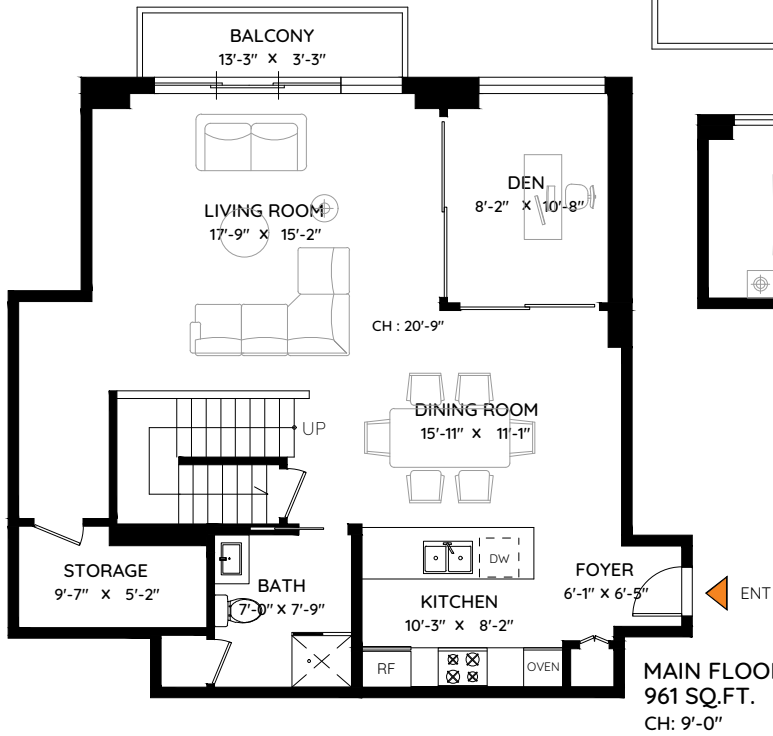
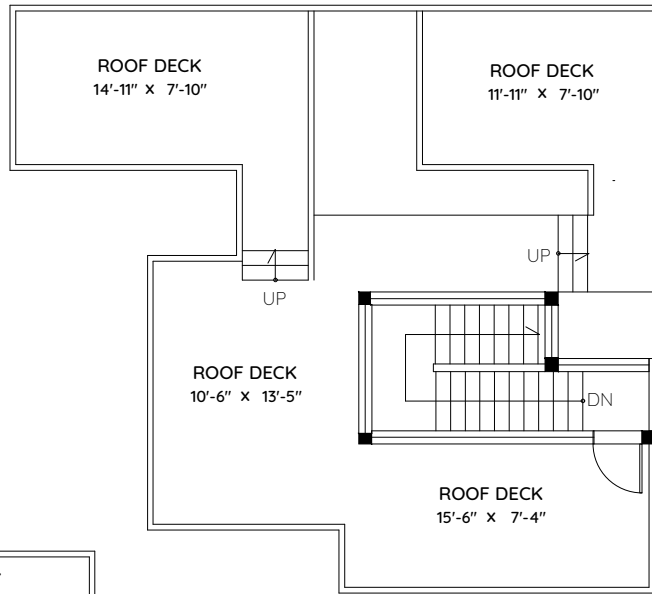
Clarence Debelle

Personal Real Estate Corporation
Greater Vancouver's Pre-Eminent Luxury and Family Home Real Estate Agent

clarence@clarencedebelle.com

604.726.5780

MAIN	961 SQ.FT.
UPPER	766 SQ.FT.
TOP	102 SQ.FT.
TOTAL	1,829 SQ.FT.
BALCONY	50 SQ.FT.
ROOF DECK	600 SQ.FT.
TOTAL	650 SQ.FT.



The floor plan and measurements are approximate, typically within +/- 2%. These are intended strictly for advertising purposes. They may encompass unfinished areas and are not intended for architectural or construction applications. There may be variances in the numbers if there were restrictions on property access or if taking precise measurements at the time of measuring isn't feasible. E&O insured.

