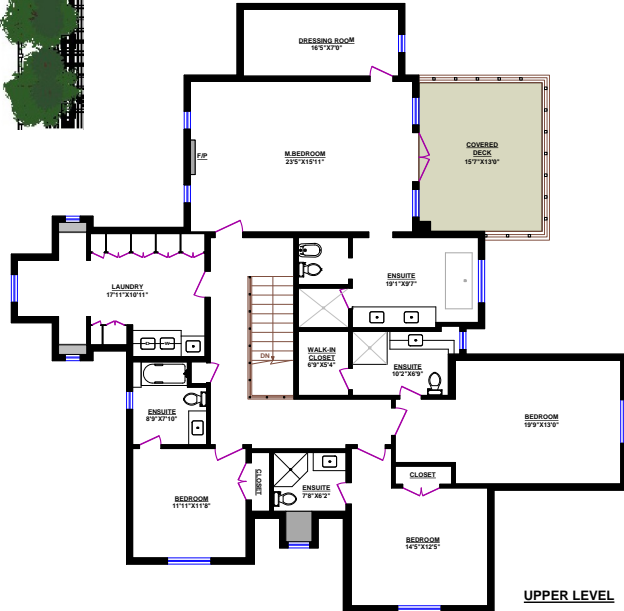
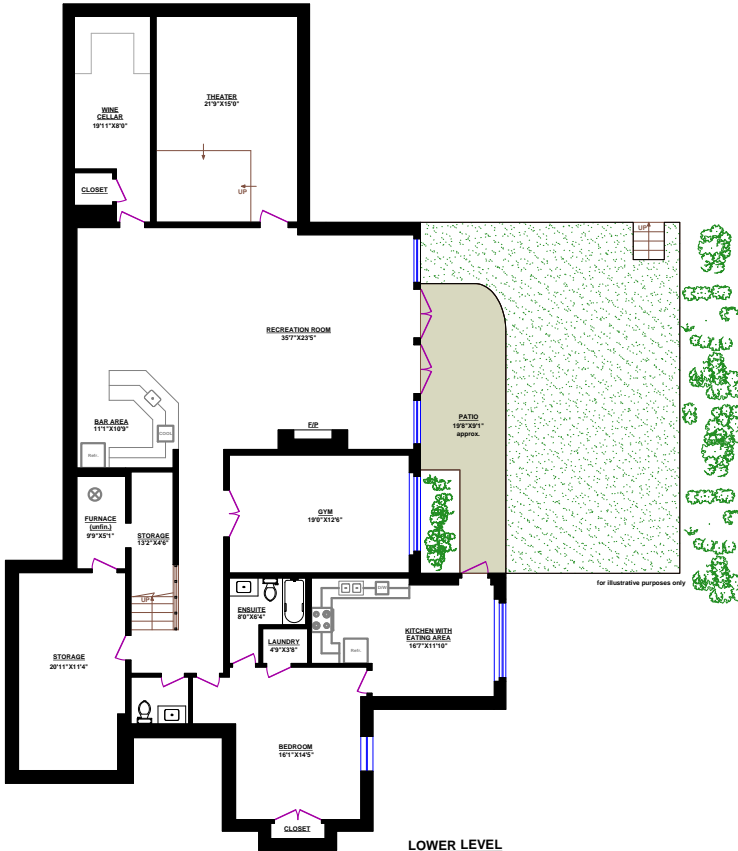


MAIN FLOOR



UPPER LEVEL



LOWER LEVEL

2150 GISBY STREET, WEST VANCOUVER

TOTALS		OTHER AREAS:	
Main Floor (finished):	2,699 sq.ft.	Storage:	40 sq.ft.
Upper Level (finished):	2,220 sq.ft.	Garage:	800 sq.ft.
Lower Level (finished):	3,056 sq.ft.	Covered Deck:	234 sq.ft.
TOTAL FINISHED:	7,975 sq.ft.	Patio (Main):	500 sq.ft.
Lower Level (unfinished):	63 sq.ft.		
GRAND TOTAL:	8,038 sq.ft.		

